

# MV-374/MV-378

## 4 / 8 Channels VoIP GSM Gateway



**MV-374/MV-378** is a 4/8 channels VoIP GSM Gateway for call termination (VoIP to GSM ) and origination (GSM to VoIP). It is SIP based and compatible with Asterisk, Trixbox, IP-PBX and VoIPBuster. It can enable to make 4/8 calls simultaneously from VoIP to GSM networks and GSM network to VoIP .

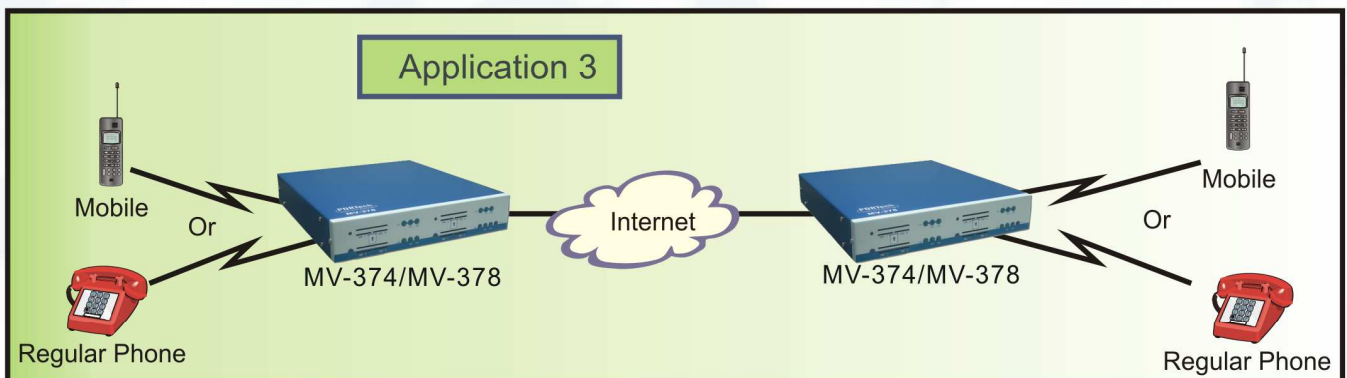
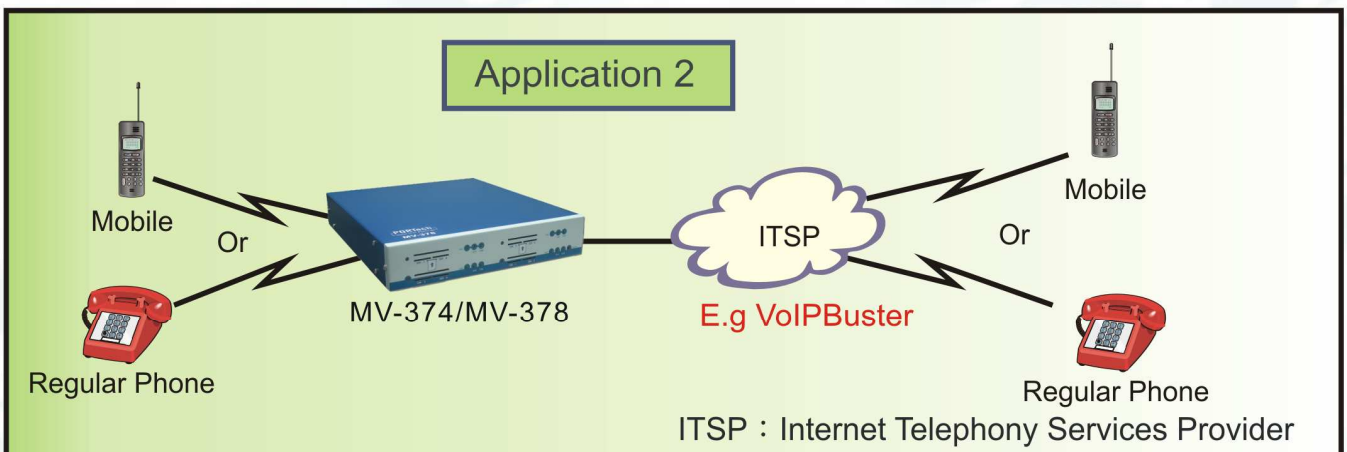
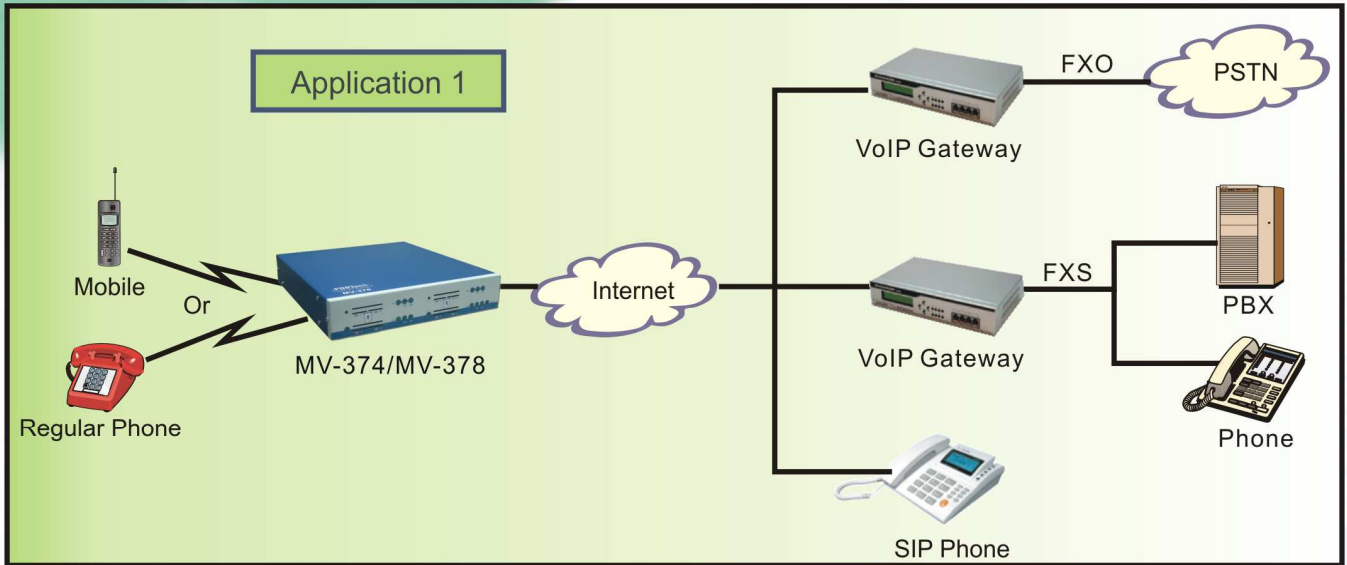
### Function

- VoIP(SIP) 、 GSM conversion.( MV-374/MV-378).
- 50 sets of LAN --> MOBILE routes setting.  
50 sets of MOBILE --> LAN routes setting.
- Voice response for setting and status(dial in from mobile).
- For call termination (VoIP to GSM) and origination (GSM to VoIP).
- Standard SIP(RFC2543 , RFC3261) protocol , communicates with other gateway or PC.
- All functions can be set on web.
- SMS sending and receiving.

### Specification

- Protocols:SIP (RFC2543,RFC3261).
- TCP/IP:IP/TCP/UDP/RTP/RTCP,CMP/ARP/RARP/SNTP,DHCP/DNS Client, IEEE802.1P/Q,ToS/DiffServ,NAT Traversal,STUN,uPnP,IP Assignment,Static IP, DHCP,PPPoE.
- Codec:G.711 u-Law,G.711 a-Law,G.723.1 (5.3k),G.723.1 (6.3k), G.729A,G.729A/B, Voice Quality,VAD,CNG,AEC,LEC,Packet loss.
- GSM (MV-374/MV-378):Triband:900/1800/1900 MHz,Triband:850/1800/1900MHz. 3G/UMTS Version for all world and Japen (SoftBank Mobile).  
3G:EDGE/GPRS 850/ 900/1800/1900 MHz / HSDPA/UMTS 850/1900/2100 MHz.

# MV-374/MV-378



**PORTech**  
Your CTI Partner

PORTech Communications Inc.

150 Shiang Shung North Road  
Tai Chung  
Taiwan 403  
Tel: (886 4) 23058000  
Fax: (886 4) 23022596  
E-Mail: sales@portech.com.tw  
SkyPBX account: PORTech  
Http://www.portech.com.tw