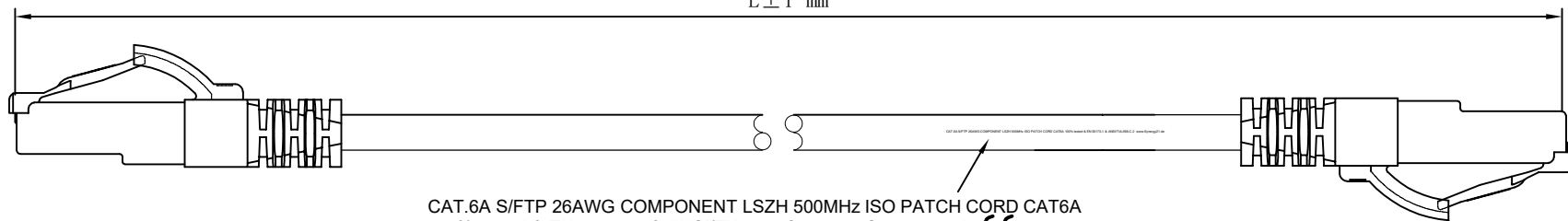
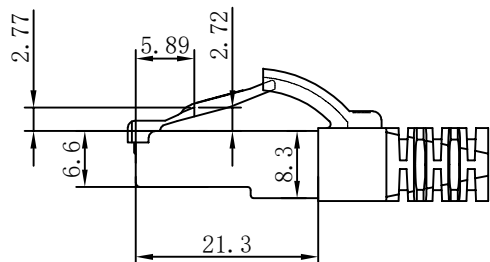
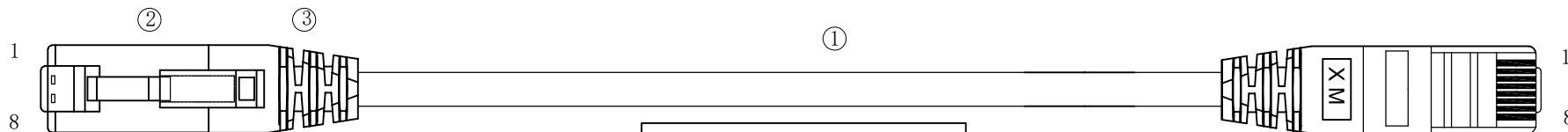


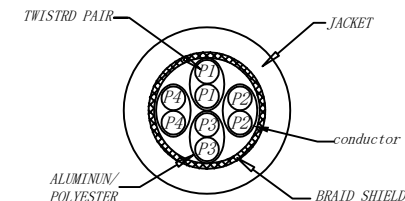
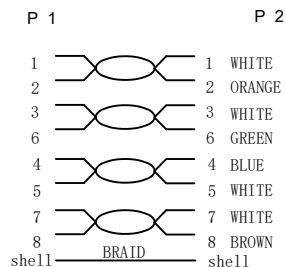
L ± T mm



CAT.6A S/FTP 26AWG COMPONENT LSZH 500MHz ISO PATCH CORD CAT6A  
100% tested & EN 50173-1 & ANSI/TIA-568-C.2 www.Synergy21.de **CE**



WIRING DIAGRAM



MATERIAL LIST:

| ③   | OVER MOLD  | PVC 75A   | 8PCS  |        |
|-----|------------|---|-------|--------|
| ○   | PLUG       | RJ45 8P8C Shielded Plug, Pin Gold Plated 3u", Shell Nickel Plating , Transparent Blue | 2PCS  |        |
| ⊙   | CABLE      | S/FTP CAT. 6A 26AWG (BC+AL-FOIL)*4PAIR+Braid (AL-MG)+ JACKET:LSZH OD:6.0±0.2MM        | 1PCS  |        |
| NO. | PARTS NAME | SPECIFICATION STANDARD  | QT' Y | REMARK |

NOTE:

- ELECTRICAL TEST:
  - 100% OPEN SHORT, MISS WIRE TEST
  - INSULATION RESISTANCE:DC 300V 10M Ohm;
  - CONTACTOR RESISTANCE:1 OHM per meter
- FLUKE TEST:Component test, ISO PATCH CORD CAT6A XXM
- Operating temperature:-20°C ~ + 75°C
- ROHS 3.0 AND REACH COMPLIANT
- Support PoE/PoE+/PoE++
- Packing:Synergy21 PE Bag+Label
- Minimum of the bending radius is 60mm
- Flame retardant (IEC60332-1-2)  
Low smoke(IEC 61034)  
Halogen free(IEC 60754-2)
- GHMT Certificate no. c7536b-22

|       |     |                                 |            |      |              |                                    |                      |            |          |    |
|-------|-----|---------------------------------|------------|------|--------------|------------------------------------|----------------------|------------|----------|----|
|       |     | Update label                    | 2022-09-07 | A3   | SYNERGY 21   |                                    |                      |            |          |    |
| Hasia |     | change "ROSH 2.0" to "ROSH 3.0" | 2022-02-25 | A2   |              |                                    |                      |            | CUSTOMER |    |
|       |     | Add IEC60332-1-2                | 2021-01-23 | A1   | PRODUCT NAME | CAT. 6A S/FTP 26AWG LSZH COMPONENT | manufacture country: | CHINA      | UNIT     | MM |
|       |     | NEW                             | 2019-02-25 | A    | DRAWNBY      | CHECKBY                            | APPROVE              | DATE       |          |    |
| BY    | CHK | REVISION RECORD MODIFICATIONS   | DATE       | REV. | SYNERGY 21   | SYNERGY 21                         | SYNERGY 21           | 2019-02-25 |          |    |


Chart:

| COLOR:GREY RAL 7035 |           |                  |
|---------------------|-----------|------------------|
| ITEM                | LENGTH/mm | PACKING          |
| S217111             | 500±15    | SYNERGY 21 A Bag |
| S217112             | 1000±20   | SYNERGY 21 B Bag |
| S217113             | 1500±30   | SYNERGY 21 B Bag |
| S217114             | 2000±30   | SYNERGY 21 B Bag |
| S217115             | 3000±50   | SYNERGY 21 B Bag |
| S217116             | 5000±100  | SYNERGY 21 B Bag |
| S217117             | 7500±200  | SYNERGY 21 B Bag |
| S217118             | 10000±200 | SYNERGY 21 C Bag |
| S217119             | 15000±300 | SYNERGY 21 C Bag |
| S217120             | 20000±300 | SYNERGY 21 C Bag |

| COLOR:BLACK Pantone black 3C |           |                  |
|------------------------------|-----------|------------------|
| ITEM                         | LENGTH/mm | PACKING          |
| S217122                      | 500±15    | SYNERGY 21 A Bag |
| S217123                      | 1000±20   | SYNERGY 21 B Bag |
| S217124                      | 1500±30   | SYNERGY 21 B Bag |
| S217125                      | 2000±30   | SYNERGY 21 B Bag |
| S217126                      | 3000±50   | SYNERGY 21 B Bag |
| S217127                      | 5000±100  | SYNERGY 21 B Bag |
| S217128                      | 7500±200  | SYNERGY 21 B Bag |
| S217129                      | 10000±200 | SYNERGY 21 C Bag |
| S217130                      | 15000±300 | SYNERGY 21 C Bag |
| S217131                      | 20000±300 | SYNERGY 21 C Bag |

| COLOR:BLUE Pantone 647C |           |                  |
|-------------------------|-----------|------------------|
| ITEM                    | LENGTH/mm | PACKING          |
| S217133                 | 500±15    | SYNERGY 21 A Bag |
| S217134                 | 1000±20   | SYNERGY 21 B Bag |
| S217135                 | 1500±30   | SYNERGY 21 B Bag |
| S217136                 | 2000±30   | SYNERGY 21 B Bag |
| S217137                 | 3000±50   | SYNERGY 21 B Bag |
| S217138                 | 5000±100  | SYNERGY 21 B Bag |
| S217139                 | 7500±200  | SYNERGY 21 B Bag |
| S217140                 | 10000±200 | SYNERGY 21 C Bag |
| S217141                 | 15000±300 | SYNERGY 21 C Bag |
| S217142                 | 20000±300 | SYNERGY 21 C Bag |

| COLOR:WHITE RAL9003 |           |                  |
|---------------------|-----------|------------------|
| ITEM                | LENGTH/mm | PACKING          |
| S217144             | 500±15    | SYNERGY 21 A Bag |
| S217145             | 1000±20   | SYNERGY 21 B Bag |
| S217146             | 1500±30   | SYNERGY 21 B Bag |
| S217147             | 2000±30   | SYNERGY 21 B Bag |
| S217148             | 3000±50   | SYNERGY 21 B Bag |
| S217149             | 5000±100  | SYNERGY 21 B Bag |
| S217150             | 7500±200  | SYNERGY 21 B Bag |
| S217151             | 10000±200 | SYNERGY 21 C Bag |
| S217152             | 15000±300 | SYNERGY 21 C Bag |
| S217153             | 20000±300 | SYNERGY 21 C Bag |



**Cable ID: Item No** **Test Summary: PASS**

Date / Time: 02-20-2019 9:08:01    Operator: QC    Model: DTX-1800

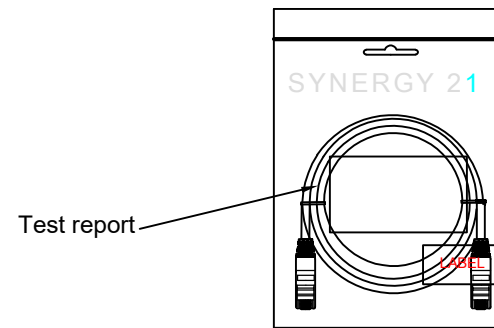
Headroom: 1.7 1.2 dB NEXT(36.78)    Software Version: 2.7800    Main S/N: 9781211

Test Limit: ISO Patch Cord Cat6A 0.5m    Limits Version: 1.9500    Remote S/N: 9781212

Cable Type: Cat 7 S/FTP    Calibration Date:    Main Adapter: DTX-PC6A/MN ISO/IEC

NVP: 76.0%    Main (Tester): 09/26/2016    Remote Adapter: DTX-PC6A/SR ISO/IEC

Remote (Tester): 09/26/2016



|       |     |                                 |            |      |              |                                    |                      |               |      |    |
|-------|-----|---------------------------------|------------|------|--------------|------------------------------------|----------------------|---------------|------|----|
|       |     | Update label                    | 2022-09-07 | A3   | SYNERGY 21   |                                    |                      |               |      |    |
| Hasia |     | change "ROSH 2.0" to "ROSH 3.0" | 2022-02-25 | A2   | CUSTOMER     |                                    | ITEM NO.             | See The Chart |      |    |
|       |     | Add IEC60332-1-2                | 2021-01-23 | A1   | PRODUCT NAME | CAT. 6A S/FTP PATCH CORD COMPONENT | manufacture country: | CHINA         | UNIT | MM |
|       |     | NEW                             | 2019-02-25 | A    | DRAWNBY      | CHECKBY                            | APPROVE              | DATE          |      |    |
| BY    | CHK | REVISION RECORD MODIFICATIONS   | DATE       | REV. | SYNERGY 21   | SYNERGY 21                         | SYNERGY 21           | 2019-02-25    |      |    |

| COLOR:ORANGE Pantone 1575C |           |                  |
|----------------------------|-----------|------------------|
| ITEM                       | LENGTH/mm | PACKING          |
| S217155                    | 500±15    | SYNERGY 21 A Bag |
| S217156                    | 1000±20   | SYNERGY 21 B Bag |
| S217157                    | 1500±30   | SYNERGY 21 B Bag |
| S217158                    | 2000±30   | SYNERGY 21 B Bag |
| S217159                    | 3000±50   | SYNERGY 21 B Bag |
| S217160                    | 5000±100  | SYNERGY 21 B Bag |
| S217161                    | 7500±200  | SYNERGY 21 B Bag |
| S217162                    | 10000±200 | SYNERGY 21 C Bag |
| S217163                    | 15000±300 | SYNERGY 21 C Bag |
| S217164                    | 20000±300 | SYNERGY 21 C Bag |

| COLOR:PINK Pantone 212C |           |                  |
|-------------------------|-----------|------------------|
| ITEM                    | LENGTH/mm | PACKING          |
| S217166                 | 500±15    | SYNERGY 21 A Bag |
| S217167                 | 1000±20   | SYNERGY 21 B Bag |
| S217168                 | 1500±30   | SYNERGY 21 B Bag |
| S217169                 | 2000±30   | SYNERGY 21 B Bag |
| S217170                 | 3000±50   | SYNERGY 21 B Bag |
| S217171                 | 5000±100  | SYNERGY 21 B Bag |
| S217172                 | 7500±200  | SYNERGY 21 B Bag |
| S217173                 | 10000±200 | SYNERGY 21 C Bag |
| S217174                 | 15000±300 | SYNERGY 21 C Bag |
| S217175                 | 20000±300 | SYNERGY 21 C Bag |

| COLOR:GREEN Pantone 3278C |           |                  |
|---------------------------|-----------|------------------|
| ITEM                      | LENGTH/mm | PACKING          |
| S217177                   | 500±15    | SYNERGY 21 A Bag |
| S217178                   | 1000±20   | SYNERGY 21 B Bag |
| S217179                   | 1500±30   | SYNERGY 21 B Bag |
| S217180                   | 2000±30   | SYNERGY 21 B Bag |
| S217181                   | 3000±50   | SYNERGY 21 B Bag |
| S217182                   | 5000±100  | SYNERGY 21 B Bag |
| S217183                   | 7500±200  | SYNERGY 21 B Bag |
| S217184                   | 10000±200 | SYNERGY 21 C Bag |
| S217185                   | 15000±300 | SYNERGY 21 C Bag |
| S217186                   | 20000±300 | SYNERGY 21 C Bag |

| COLOR:YELLOW Pantone 135C |           |                  |
|---------------------------|-----------|------------------|
| ITEM                      | LENGTH/mm | PACKING          |
| S217188                   | 500±15    | SYNERGY 21 A Bag |
| S217189                   | 1000±20   | SYNERGY 21 B Bag |
| S217190                   | 1500±30   | SYNERGY 21 B Bag |
| S217191                   | 2000±30   | SYNERGY 21 B Bag |
| S217192                   | 3000±50   | SYNERGY 21 B Bag |
| S217193                   | 5000±100  | SYNERGY 21 B Bag |
| S217194                   | 7500±200  | SYNERGY 21 B Bag |
| S217195                   | 10000±200 | SYNERGY 21 C Bag |
| S217196                   | 15000±300 | SYNERGY 21 C Bag |
| S217197                   | 20000±300 | SYNERGY 21 C Bag |

| COLOR:RED Pantone 199C |           |                  |
|------------------------|-----------|------------------|
| ITEM                   | LENGTH/mm | PACKING          |
| S217199                | 500±15    | SYNERGY 21 A Bag |
| S217200                | 1000±20   | SYNERGY 21 B Bag |
| S217201                | 1500±30   | SYNERGY 21 B Bag |
| S217202                | 2000±30   | SYNERGY 21 B Bag |
| S217203                | 3000±50   | SYNERGY 21 B Bag |
| S217204                | 5000±100  | SYNERGY 21 B Bag |
| S217205                | 7500±200  | SYNERGY 21 B Bag |
| S217206                | 10000±200 | SYNERGY 21 C Bag |
| S217207                | 15000±300 | SYNERGY 21 C Bag |
| S217208                | 20000±300 | SYNERGY 21 C Bag |

|       |     |                                 |            |      |              |                                    |                      |               |      |    |
|-------|-----|---------------------------------|------------|------|--------------|------------------------------------|----------------------|---------------|------|----|
|       |     | Update label                    | 2022-09-07 | A3   | SYNERGY 21   |                                    |                      |               |      |    |
| Hasia |     | change "ROSH 2.0" to "ROSH 3.0" | 2022-02-25 | A2   | CUSTOMER     |                                    | ITEM NO.             | See The Chart |      |    |
|       |     | Add IEC60332-1-2                | 2021-01-23 | A1   | PRODUCT NAME | CAT. 6A S/FTP PATCH CORD COMPONENT | manufacture country: | CHINA         | UNIT | MM |
|       |     | NEW                             | 2019-02-25 | A    | DRAWNBY      | CHECKBY                            | APPROVE              | DATE          |      |    |
| BY    | CHK | REVISION RECORD MODIFICATIONS   | DATE       | REV. | SYNERGY 21   | SYNERGY 21                         | SYNERGY 21           | 2019-02-25    |      |    |

## Zertifikat

Nr. z7536b-22

### Auftraggeber:

ALLNET Computersysteme GmbH  
Maistrasse 2  
82110 Germering, Deutschland

Kategorie 6A

### Prüfling(e):

Symmetrische Kupferschnur:  
**Patch cable RJ45, CAT6A 500Mhz, Xm, color S/FTP, component test with certificate, with test report, Synergy 21**

### Art.-Nr.:

S217144-S217153 (0,5m-20m) weiß  
S217155-S217164 (0,5m-20m) orange  
S217166-S217175 (0,5m-20m) rosa  
S217122-S217131 (0,5m-20m) schwarz  
S217199-S217208 (0,5m-20m) rot  
S217188-S217197 (0,5m-20m) gelb  
S217111-S217120 (0,5m-20m) grau  
S217133-S217142 (0,5m-20m) blau  
S217177-S217186 (0,5m-20m) grün

### Bewertungsstandard(s):

ISO/IEC 11801-1 Ed.1.0 (2017-11)  
IEC 61935-2 Ed.3.0 (2010-07)

### Resultat:

Der Prüfling hält bei den im Prüfbericht genannten Prüfparametern die Grenzwerte der besagten Bewertungsstandards ein.

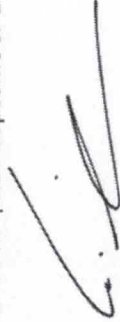
## Symmetrische Kupferschnur, Kategorie 6A

## GHMT Type Approval

Die bei der Prüfung ermittelten Ergebnisse beziehen sich auf den beschriebenen und vom Auftraggeber vorgelegten Prüfling. Zukünftige technische Änderungen der geprüften Produkte unterliegen dem Verantwortungsbe- reich der Hersteller.

Dieses Zertifikat verweist auf den ausführlichen Prüfbericht Nr. **R7536b-22** und ist nur in Verbindung mit diesem gültig. Dieses Zertifikat ist nach Prüfdatum 24 Monate gültig.

Bexbach, 05. September 2022



Dipl.-Ing. Dirk Wilhelm  
(Vorstandsvorsitzender)

### GHMT AG

In der Kolling 320  
D-66450 Bexbach

Postfach 11 16  
D-66442 Bexbach

T: +49 6826 92 28-0  
F: +49 6826 92 28-290

info@ghmt.de  
www.ghmt.de



Durch die DAKKS nach DIN EN ISO/IEC 17025:2018 akkreditiertes Prüflaboratorium.  
Die Akkreditierung gilt für die in der Urkunde (D-PL-17559-01-00) aufgeführten Prüfverfahren.

**HOCHVERFÜGBARKEIT IM GANZEN  
BEDINGT PRÄZISION IM DETAIL.**