

## ALLNET Switch full managed 24 Port Gigabit 390W / 24x PoE+ / 4x SFP / FANLESS / 19" / "ALL-SG8626PM"

>>> [Go to the shop article](#)



### EAN CODE



## ALLNET Switch full managed 24 Port Gigabit 390W / 24x PoE+ / 4x SFP / FANLESS / 19" / "ALL-SG8626PM"

### Cost-effective 24 Port Smart Managed Gigabit Layer-2 Switch + 4x SFP MiniGbic Slots without Fan for Desktop and 19" Rack Installation

#### Highlights:

- 24 Port Gigabit Layer2+ Switch Architecture
- Port 23/24 combo ports for TP or SFP + Port 25/26 SFP slots
- Supports various PoE management functions, including PoE shedule, PoE PD alive, etc.
- Supports SFP DDM & cable diagnostics
- Supports G.8032 ERPS, self-detection time < 20 ms
- Supports port aggregation
- 4KV surge protection, 6KV contact/8KV air ESD protection
- Totally fanless, no more annoying noise.... max. 390W budget
- 19 "inch angle or wall/table mounting possible

ALL-SG8626PM is a layer 2+ full managed switch PoE, which supplies 24\*\*10/100/1000M RJ45 ports and 4\*1G uplink SFP slot ports ( 2 shared combo), with 24 port PoE with IEEE802.3 af/at standards, single port POE power output up to 30W.

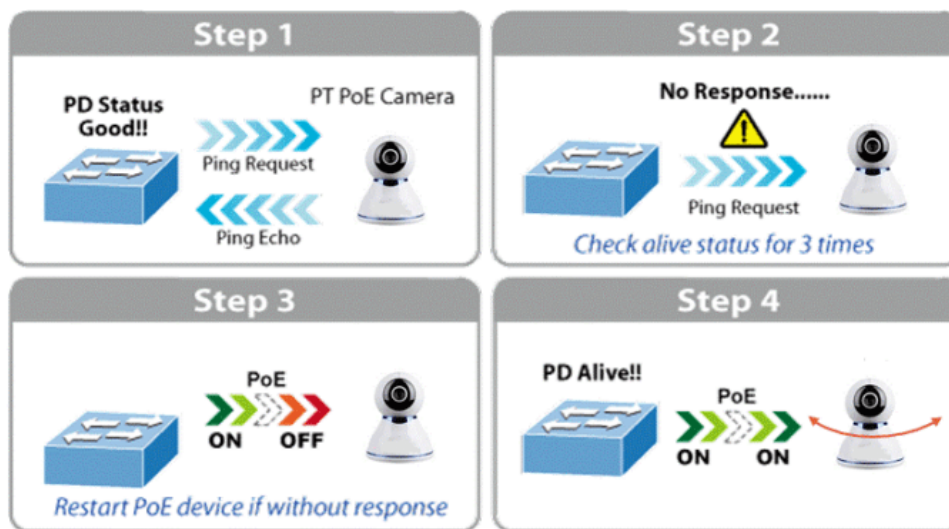
### Rich PoE Management Function

Being the managed PoE switches for CCTV surveillance, wireless and VoIP networks, ALL-SG8626PM features the following special PoE management functions:

- PoE PD-alive check
- Scheduled power rebooting
- PoE schedule
- PoE usage monitoring
- Soft-reboot PoE Non-stop
- PoE port power feeding priority

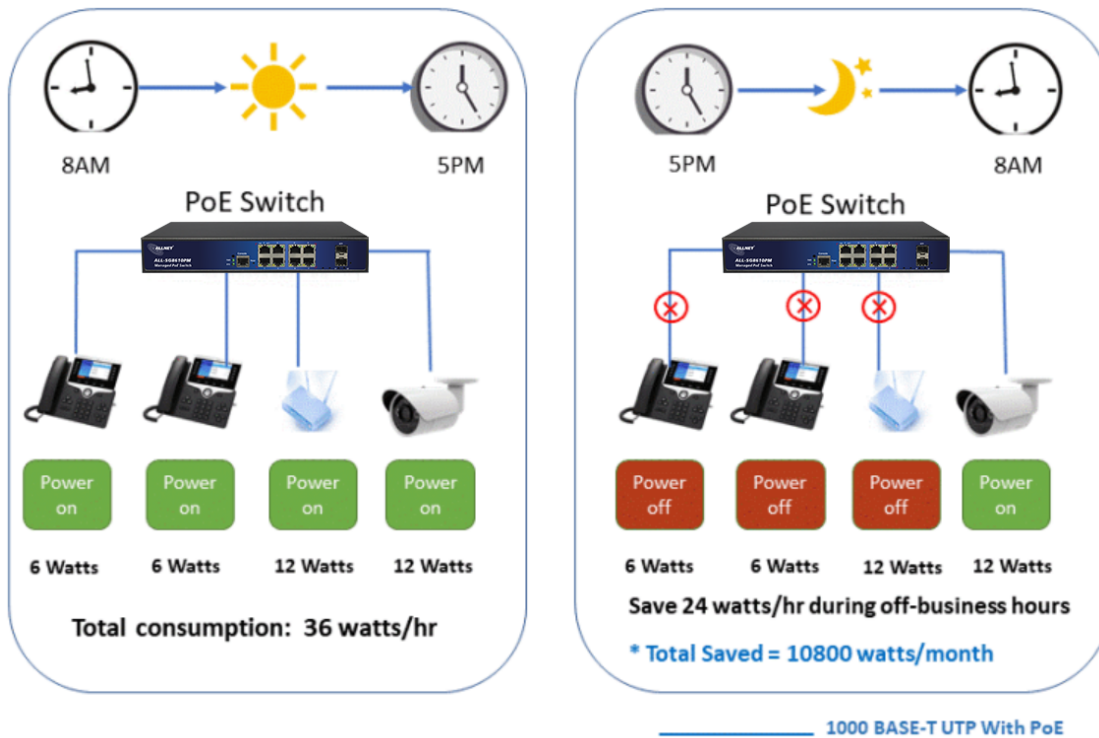
### Smart PoE PD-Alive Check

ALL-SG8626PM managed PoE switch can be configured to monitor connected PD status in real time. Once the PD stops working and responding, ALL-SG8626PM will resume the PoE port power and bring the PD back to work. They will greatly enhance the network reliability through the PoE port resetting the PD's power source and reducing administrator management burden.



### PoE Schedule Function for Energy Saving

For environmental protection purpose, the ALL-SG8626PM switch Ethernet PoE can effectively control the power supply besides its capability of giving high watts power. The PoE schedule function helps to enable or disable PoE power feeding for each PoE port during specified time intervals and it is a powerful function to help SMBs or enterprises save power and money.



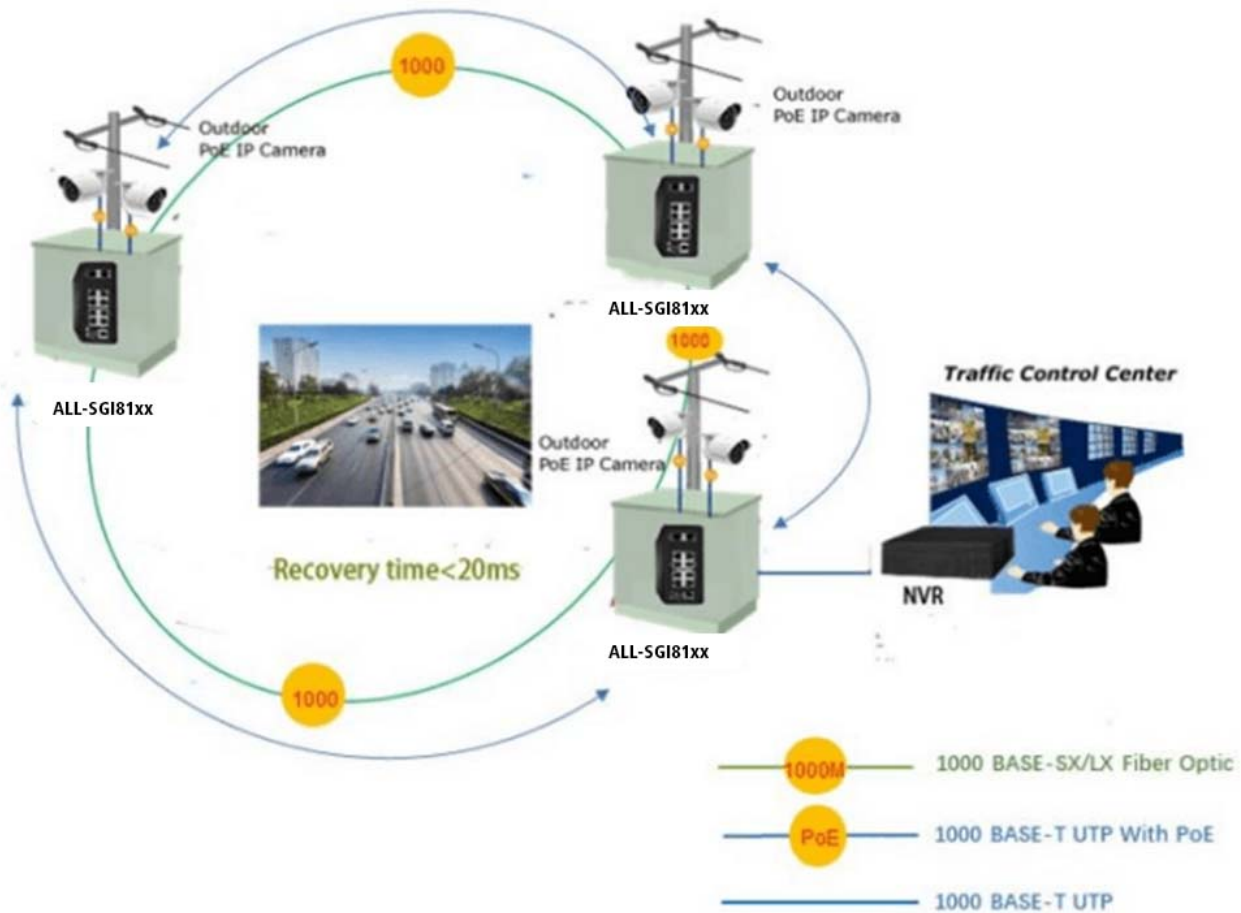
### Scheduled PD Re-starting

The ALL-SG8626PM smart switch PoE allows each of the connected PoE IP cameras or PoE wireless access points to reboot at a specific time each week. Therefore, it will reduce the chance of IP camera or AP crash resulting from buffer overflow.

### Fast Recovery Redundant Ring for Critical Network Applications

The ALL-SG8626PM supports redundant ring technology and features strong, rapid self-recovery capability to prevent interruptions and external intrusions. It incorporates advanced ITU-T G.8032 ERPS technology, Spanning Tree Protocol (802.1s MSTP), and redundant power input system into customer's industrial automation network to enhance system reliability and uptime in harsh factory environments. In a certain simple Ring network, the recovery time of data link can be as fast as 20ms.

## ERPS Ring for Video Transmission Redundancy



### Strong Layer 2 Features

The ALL-SG8626PM layer 2 Ethernet switch can be programmed for advanced Layer 2 switch management functions such as dynamic port link aggregation, 802.1Q tagged VLAN, Q-in-Q VLAN, private VLAN, Multiple Spanning Tree Protocol (MSTP), QoS, bandwidth control, IGMP snooping and MLD snooping. Via the aggregation of supporting ports, the ALL-SG8626PM allows the operation of a high-speed trunk group that comes with multiple ports and supports fail-over as well.

### Efficient and Various Management Methods

For efficient management, the ALL-SG8626PM is equipped with console, Web and SNMP management interfaces.

With the built-in Web-based management interface, it offers an easy-to-use, platform-independent management and configuration facility.

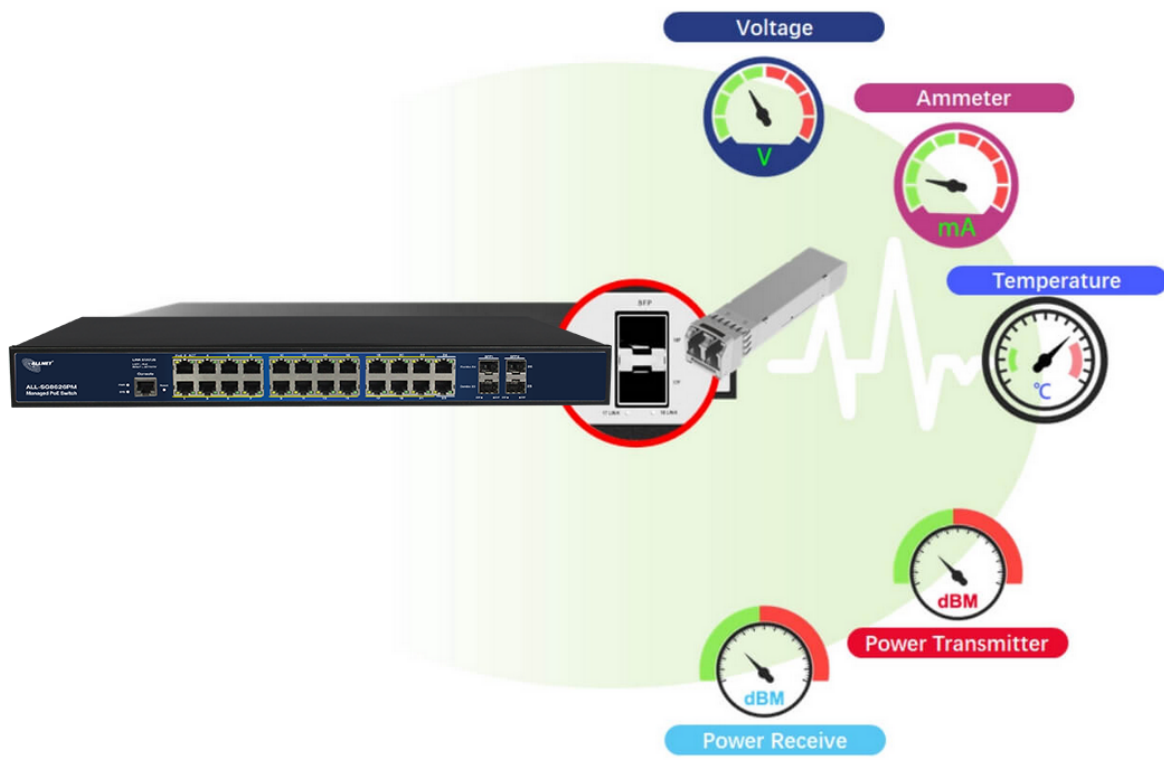
For text-based management, it can be accessed via Telnet and the console port.

For standard-based monitor and management software, it offers SNMPv3 connection which encrypts the packet content at each session for secure remote management.

### Intelligent PoE Switch SFP DDM Function

The ALL-SG8626PM supports SFP-DDM (digital diagnostic monitor) function that greatly helps network administrator to easily monitor real-time parameters of the SFP transceivers, such as optical output power, optical input power, temperature, laser bias current, and transceiver supply voltage.

## Digital Diagnostic Monitor (DDM)



### Technische Daten:

Model	ALL-SG8626PM
Copper Ports	22-10/100/1000BASE-T RJ45 auto-MDI/MDI-X ports
Combo Interfaces	2x 100/1000BASE-X SFP interface shared with port-23 and port-24; Supports 100/1000Mbps dual mode and DDM
Fiber Ports	2-100/1000BASE-X SFP interfaces, supports 100/1000Mbps dual mode
PoE Ports	1~24-802.3af/802.3at PoE Injector Ports



Console Ports	1 x RS-232-to-RJ45 serial port (115200, 8, N, 1)
Switch Architecture	Store-and-Forward
Switch Fabric	52 Gbps/non-blocking
Throughput	38.69Mpps @64 bytes
Address Table	8K entries
Share Data Buffer	4 Mb
Jumbo Frame	9600 Bytes
SDRAM	1Gb
Flash Memory	128Mb
Flow Control	IEEE 802.3x pause frame for full-duplex Back pressure for half-duplex
Reset Button	>2 sec.: Factory default and reset
Power Supply	100~240V AC, 50/60Hz, 4A (max.)
Power Consumption	Max. 400 watts/1122 BTU
PoE Standards	IEEE 802.3af Power over Ethernet/PSE IEEE 802.3at Power over Ethernet Plus/PSE
PoE Power Supply Type	Per Port 52V DC, 300mA. Max. 15.4 watts (IEEE 802.3af) Per Port 52V DC, 600mA. Max. 30 watts (IEEE 802.3at)
LED Indicators	Power: Green Solid on- power work normal, off- power disconnected System: Green Blink -work normally, solid on- soft work abnormal, fast Blink – soft upgrade PoE: Yellow Solid on- PoE work normally, Off- PoE doesn't work, Blink - PoE overload 10/100/1000T RJ45 Interfaces (Port 1 to Port 24): 1000 LNK/ACT (Green) Blink - port connected with data transmission; Solid on- port connected without data transmission 100/1000Mbps SFP Interfaces (Port 22 to Port 24): Green



	Blink - port connected with data transmission; Solid on-port connected without data transmission
EMC	Surge Immunity: 4KV Per: IEC61000-4-5 ESD Protection: ESD Level 4 Per: IEC61000-4-2 EFT Level 4 Per: IEC61000-4-4
<b>Layer2 Functions</b>	
Port configuration	Auto-negotiation Flow Control Port Mirror: TX/RX/BOTH; Many-to-1 monitor CPU Mirror Traffic statistics
Link Aggregation	Static link aggregation LACP (Dynamic Trunk/Static Trunk) Algorith based on Source/Destination MAC Algorithm based on Source/Destination IP
MAC Table	Aging Time Static MAC address Dynamic MAC address management
VLAN	4094 Active VLANs 4094 VID 802.1Q Tag VLAN Port VLAN Protocol VLAN MAC VLAN Voice VLAN

	<p>802.1ad Q-in-Q tunneling</p> <p>Private VLAN (Protected port)</p> <p>GARP/GVRP</p>
ACL	<p>256ACLs</p> <p>L2, L3 e L4</p> <p>Time-based ACL</p> <p>IP ACL</p> <p>MAC ACL</p> <p>MAC-IP ACL</p> <p>User-Defined ACL</p> <p>ICMPv6</p>
Spanning tree	<p>802.1D Spanning Tree Protocol (STP)</p> <p>802.1w Rapid Spanning Tree Protocol (RSTP)</p> <p>802.1s Multiple Spanning Tree Protocol (MSTP)</p> <p>Loop Guard</p> <p>Root Guard</p> <p>TC-BPDU Guard</p> <p>BPDU Guard</p> <p>BPDU Filter</p>
Ring Protection	<p>&lt;20ms G.8032 ERPS Ring</p> <p>Fast Ring</p>
Multicast	<p>256 groups</p> <p>IGMP v1/v2/v3 Snooping, Fast Leave</p> <p>MLD Snooping</p> <p>Multicast VLAN</p> <p>IGMP filter</p>





	MVR Multicast Routing
QOS	8 mapping IDs to 8 level priority queues CoS port-based CoS 802.1p-based CoS DSCP-based Scheduling algorithms SP, WRR, SP+WRR Storm Control (Broadcast, Multicast, Unknown Unicast) Bandwidth control per port SWRR, DWRR for Scheduling Flow Redirect Precedence TOS Rate Limiting (Ingress/Egress) Stri Priority
Security Features	Port Security MAC address filter ARP Association (Manual, ARP scanning, DHCP snooping) ARP Protection AAA DAI DoS (Denial of Service) Classification of packages based on: End.MAC, IP End, TCP / UDP Ports, Protocol Type; 802.1x Authentication (port-based e MAC-based)



	<p>TACACS/TACACS+ Authentication</p> <p>RADIUS Authentication</p> <p>DHCP Filter</p> <p>Guest VLAN</p> <p>SSLv2/SSLv3/TLSv1</p> <p>SSHv1/SSHv2</p> <p>Restriction of WEB access based on: IP Address, And. MAC and Port;</p> <p>Port Isolation</p> <p>Loopback detection</p>
Management	<p>SNMP v1/v2c/v3 with Full Private MIBs</p> <p>RMON 4 groups</p> <p>WEB (HTTP/HTTPS)</p> <p>CLI (Telnet, Console, SSHv1/v2)</p> <p>Firmware upgrade via console/web/TFTP</p> <p>Configuration Backup/Reload</p> <p>Dual Firmware</p> <p>LLDP</p> <p>Configuration Export/Import</p> <p>CDP Aware</p> <p>OAM (IEEE802.3ah)</p> <p>CFM (IEEE802.1ag)</p> <p>sFlow</p>
Other Features	<p>DNS Client</p> <p>DHCP Relay</p> <p>DHCP Client</p>



	<p>DHCP Snooping</p> <p>DHCP Option 66</p> <p>DHCP Option 67</p> <p>DHCP Option 82</p> <p>NTP/SNTP Client</p> <p>UPNP</p> <p>UDLD</p>
PoE management	<p>Total PoE power budget control</p> <p>Per port PoE function enable/disable</p> <p>PoE admin-mode control</p> <p>PoE port power feeding priority</p> <p>Per PoE port power limitation</p> <p>PD classification detection</p> <p>PD alive check</p> <p>PoE schedule</p> <p>Soft-reboot PoE Non-stop</p>
Maintenance	<p>Cable Diagnostics</p> <p>Ping</p> <p>SFP DDM (Digital Diagnostics Monitoring)</p> <p>Thermal protection</p> <p>System log (Local and Remote)</p> <p>Memory and CPU Monitoring</p>
<b>Layer 3 functions</b>	
Static Routing	<p>IPv4 Unicast: Static Routing(Software Base)</p> <p>IPv6 Unicast: Static Routing(Software Base)</p>
IPV6	<p>IPv6 neighbor discovery (ND)</p>

	Path maximum transmission unit (MTU) discovery Internet Control Message Protocol (ICMP) version 6 TCPv6/UDPv6 Ping6 Telnet(v6) Http/Https Interface IPV6 ACL IPV6
Dimension	440x290x44.5 mm
Weight	4.5 kg
Working Temperature	-10 °C to 45 °C
Storage Temperature	-20 °C to 70 °C
MTBF	50,000hrs

## Attributes

Attribute	Value
Anzahl Ports PoE/LAN:	24/0
Belüftung Switch:	Lüfterlos
Einsatzort Switch:	19"
LAN Geschwindigkeit:	1Gbit/s
Management:	full managed
PoE Budget:	<500 Watt
PoE Port Leistung:	30W at
SFP Geschwindigkeit:	SFP 1GBit
Weight:	4.5 Kg
Warranty:	24.00 Months

## Accessories

Part No.	Name
146245	ALLNET Switch Zubehör smart managed 24 Port Gigabit PoE AT Ersatzlüfter ALL-SG8428PM
27947	ALLNET ALL4750 / Switch module SFP (mini Gbic), 1000Mbit, SX
59426	ALLNET ALL4751 / Switch module, GBIC mini module, 1000Mbit,
114334	ALLNET Switch Modul ALL4752 SFP(mini Gbic), 1000Mbit, LHX/LC
59391	ALLNET ALL4753 / Switch module GBIC Mini module, 1000Mbit, L
59393	ALLNET ALL4755 / Switch module SFP (mini Gbic), 1000Mbit, ZX
143548	ALLNET Switch Module ALL4756 SFP(Mini-GBIC), 1000Mbit, ZX/LC
141113	ALLNET ALL4780 / Switch Modul (Mini-GBIC), 2Wire-Set, max. 1
75932	Patchkabel RJ45 FTP(F/UTP) 0,25m grau, CAT5e, Synergy 21,
75939	Patchkabel RJ45 FTP(F/UTP) 0,5m grau, CAT5e, Synergy 21,
75946	Patchkabel RJ45 FTP(F/UTP) 1,0m grau, CAT5e, Synergy 21,
75959	Patchkabel RJ45 FTP(F/UTP) 2m grau, CAT5e, Synergy 21,
75966	Patchkabel RJ45 FTP(F/UTP) 3m grau, CAT5e, Synergy 21,
75973	Patchkabel RJ45 FTP(F/UTP) 5m grau, CAT5e, Synergy 21,
75979	Patchkabel RJ45 FTP(F/UTP) 7,5m grau, CAT5e, Synergy 21,
75986	Patchkabel RJ45 FTP(F/UTP) 10m grau, CAT5e, Synergy 21,
76091	Patchkabel RJ45, 15m grau, CAT5e, S-FTP(SF/UTP), Synergy 21,
76029	Patchkabel RJ45, 0,25m grau, CAT5e, S-FTP(SF/UTP), Synergy 21,
76036	Patchkabel RJ45, 0,5m grau, CAT5e, S-FTP(SF/UTP), Synergy 21,
76043	Patchkabel RJ45, 1,0m grau, CAT5e, S-FTP(SF/UTP), Synergy 21,
76056	Patchkabel RJ45, 2m grau, CAT5e, S-FTP(SF/UTP), Synergy 21,
76063	Patchkabel RJ45, 3m grau, CAT5e, S-FTP(SF/UTP), Synergy 21,
76070	Patchkabel RJ45, 5m grau, CAT5e, S-FTP(SF/UTP), Synergy 21,
76077	Patchkabel RJ45, 7,5m grau, CAT5e, S-FTP(SF/UTP), Synergy 21,
76084	Patchkabel RJ45, 10m grau, CAT5e, S-FTP(SF/UTP), Synergy 21,
76091	Patchkabel RJ45, 15m grau, CAT5e, S-FTP(SF/UTP), Synergy 21,
76117	Patchkabel RJ45, CAT6 250Mhz, 0,25m grau, S-STP(S/FTP), LSZH, Synergy 21,
76124	Patchkabel RJ45, CAT6 250Mhz, 0,5m grau, S-STP(S/FTP), LSZH, Synergy 21,
76133	Patchkabel RJ45, CAT6 250Mhz, 1,0m grau, S-STP(S/FTP), LSZH, Synergy 21,
76151	Patchkabel RJ45, CAT6 250Mhz, 2m grau, S-STP(S/FTP), LSZH, Synergy 21,
76160	Patchkabel RJ45, CAT6 250Mhz, 3m grau, S-STP(S/FTP), LSZH, Synergy 21,
76169	Patchkabel RJ45, CAT6 250Mhz, 5m grau, S-STP(S/FTP), LSZH, Synergy 21,

Part No.	Name
76178	Patchkabel RJ45, CAT6 250Mhz, 7,5m grau, S-STP(S/FTP), LSZH, Synergy 21,
76187	Patchkabel RJ45, CAT6 250Mhz,10m grau, S-STP(S/FTP), LSZH, Synergy 21,
76196	Patchkabel RJ45, CAT6 250Mhz,15m grau, S-STP(S/FTP), LSZH, Synergy 21,
140955	TP(RJ45) POE-Tester, at/af, Endspan/Midspan, standard, Synergy 21,
141255	Netzkabel 230V Schutzkontakt CEE7(Stecker)->Kaltgeräte IEC-C13(Buchse), 1m,Black IEC Lock
141254	Netzkabel 230V Schutzkontakt CEE7(Stecker)->Kaltgeräte IEC-C13(Buchse), 2m,Black IEC Lock
141256	Netzkabel 230V Schutzkontakt CEE7(Stecker)->Kaltgeräte IEC-C13(Buchse), 3m,Black IEC Lock
188424	CyberPower USV, OR-Serie, 600VA/360W, Line-Interactive, LCD, 19"/1HE, USB/RS232, IEC C13 Kaltgeräte,
188433	CyberPower USV, OR-Serie, 650VA/360W, Line-Interactive, LCD, 19"/1HE, USB/RS232, CEE7-Schutzkontakt,
188435	CyberPower USV, OR-Serie, 1000VA/600W, Line-Interactive, LCD, 19"/1HE, USB/RS232, IEC C13 Kaltgeräte
188439	CyberPower USV, OR-Serie, 1500VA/900W, Line-Interactive, LCD, 19"/1HE, USB/RS232, IEC C13 Kaltgeräte
234699	ALLNET Switch full managed Layer2+ zbh. Replacement bracket for ALL-SGxx 18/26/28/54 - Short version