

# cnMaestro™ c4000

- On-Premise Controller
- Up to 200 managed devices
- Consistent UI / UX / features
- 2 SFP Gigabit combo ports
- Tabletop and rack mount kit included



Controller Appliance for cnPilot Wi-Fi, cnMatrix Ethernet, PTP, PMP Broadband, and cnReach IIOT

Extend the power of cnMaestro to on-premises network management using the c4000 Controller Appliance

## BUILT ON cnMAESTRO

cnMaestro flexible deployment models manage the network from the Cloud Controller, on-premises server Controller, or the c4000 Controller Appliance.

Regardless of the deployment model, cnMaestro always delivers:

- The same User Interface
- Zero touch onboarding to simplify discovery, adoption and provisioning
- Manage and view device inventory reports, status, firmware, and uptime from a single console
- Monitor network key performance metrics including RF noise floor, co-channel interference, packet errors and more.
- Monitor connected client key performance metrics including signal level, device type, datarate.
- PRO Reports extend network and client monitoring up to 28 parameters from sophisticated to simple metrics.
- Integrated Help Desk diagnostic tool set
  - Initiate and view packet capture from any AP
  - Initiate on-demand network interference and noise floor scan
- Integrated Alarms and Dashboard view provides global drill-down map to overview the entire network, globally, regionally, locally.

## MSP TENANTS, GUEST PORTAL, MONETIZE HOTSPOT

MSP mode allows a service provider to create and manage tenant networks under the MSP private label brand.

For guest access networks in hotels, enterprise or public venues, cnMaestro provides a central portal creation tool to quickly design and deploy a professional portal page to thousands of access points for wired or wireless network access.

Monetize a hotspot networks with social media login, Facebook Express Wi-Fi, and integrated payment gateway. Hotspot portal allows creation of time, rate and volume limited traffic profiles enabled by vouchers or self-signup.

## MARKETS FOR c4000 CONTROLLER APPLIANCE

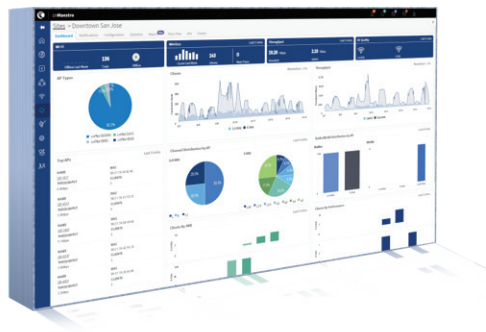
The c4000 Controller Appliance is ideal where quick and easy deployment on site is required.

Small and medium size hotels, K12 education, MDU, dormitory housing and enterprise networks will find the C4000 sized for the application.

The base c4000 Appliance supports 50 access points and 10,000 clients while cnMaestro PRO increases support to 200 managed devices; combination of Cambium cnPilot Enterprise access points, Residential access points, cnMatrix Ethernet PoE Switches, PTP and PMP Broadband as well as cnReach IIOT.

# cnMaestro™ c4000

Same powerful features of cnMaestro without a dedicated server or Cloud connectivity



## ORDERING INFORMATION

|   |   |
|---|---|
| PL-C4000XXA-WW  | cnMaestro C4000 Controller Appliance                                    |
| <i>Replace "XX" with: AN (AU/NZ) / IN / AR / CN / US / EU / UK / BR</i> |   |
| AX-12V3Annnnn   | 12VDC 3A power injector with locking 2.5mm x 5.5mm DC plug. 1.2m length |
| XA-RMKC4000-WW  | Rack Mount kit, C4000 cnMaestro Appliance                               |

## cnMAESTO c4000 CONTROLLER FEATURES

|                                       |  |
|---------------------------------------|--|
| Multi-admin Role based Access control | Manage admin privileges to monitor and/or set network and device configuration   |
| Help Desk Troubleshooting Tools       | Remote packet capture<br>Initiate interference and noise floor scan for any AP   |
| Single pane of glass                  | Single screen wireless view, wireless backhaul, 802.11 access points, Ethernet switches, plus connected wired and wireless clients |
| Frictionless On-Boarding              | Secure large scale bulk onboarding<br>Zero touch bulk provisioning, firmware updates   |
| Device Inventory                      | Inventory device tracking, status, firmware, and reports   |
| Monitor                               | Alarms and events management – Critical/Major/Minor<br>Statistics graphs and table display<br>Alarm traffic light display          |
| Key Stats                             | 7 day historical stats   |
| Managed Services Platform             | Create and manage tenant accounts with customized views and permission.<br>White label MSP brand to tenant accounts                |
| Portal Host                           | Centrally configure and manage hotspot   |
| Voucher                               | Time, Rate, and Volume limited guest access up to 1,000 client devices   |
| Social login                          | Google, Facebook credentials plus Facebook Express Wi-Fi   |
| Hierarchy View                        | Group APs into Groups, assign to Sites for easy hierarchical views and management  |
| Client Insights                       | Client history with networks aggregate and per client statistics   |

## HARDWARE SPECIFICATIONS

|                |   |
|----------------|---|
| CPU and Memory | 8-core Intel CPU<br>64GB SSD, 8GB RAM   |
| Management I/O | GE Ethernet management port<br>RJ45 console, 9600-8-N-1<br>USB2.0 for file maintenance<br>Hardware reset button<br>LEDs: Power, SSD |
| Power          | 12VDC, 4a, 2.5mm locking connector<br>100V - 240V AC/DC power supply  |
| Data Ports     | 2 x combo ports; 10/100/1000Mb<br>SFP socket or Copper RJ45   |
| Physical       | 250 x 44 x 190 (mm)   2.3Kg<br>0 - 40C operating temperature<br>Humidity 95% NC<br>Desktop or Rack. Rack mount included             |
| Certification  | CE, 60950-1, CB, CCC, RoHS, REACH, WEEE   |

