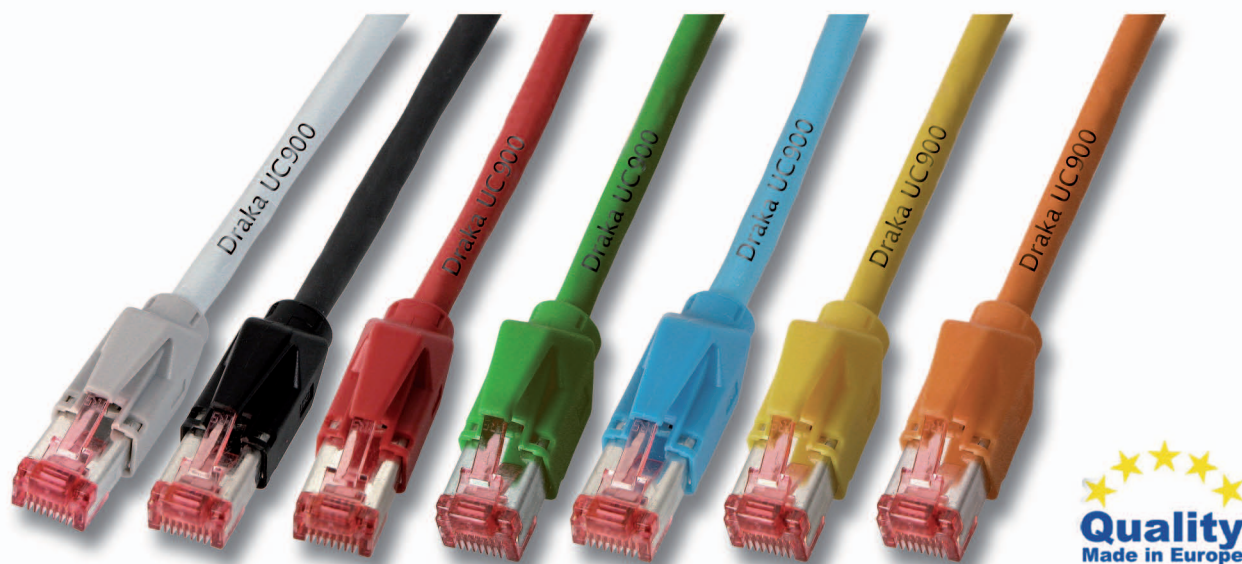


Cat.6, Hirose TM21 Patchkabel



mit S/FTP PIMF DRAKA UC900 1000 MHz Kabel

K8051.x	grau	K8050.x	schwarz	K8052.x	rot
K8053.x	grün	K8054.x	blau	K8055.x	gelb
K8056.x	orange				

- 2 x Hirose TM21, Cat.6, halogenfrei
- Belegung nach TIA/EIA 568B

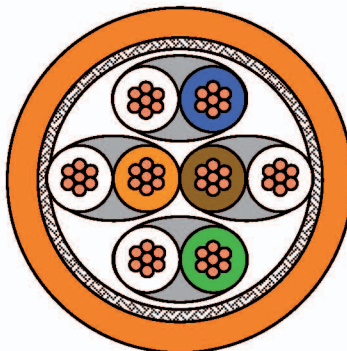
Lieferbare Längen:

0,5 - 1,0 - 1,5 - 2,0 - 3,0 - 5,0 - 7,5 - 10,0 - 15,0 - 20,0 - 25,0 - 30,0 Meter



UC900 SS27 Cat.7

S/FTP



Einsatzgebiete

Tertiär (Horizontal)

IEEE 802.3: 10Base-T; 100Base-T; 1000Base-T; 10GBase-T

IEEE 802.5 16 MB; ISDN; TPDDI; ATM

Geltende Normen

EN 50173-1; EN 50288-4-2

ISO/IEC 11801; IEC 61156-5

Flammwidrigkeit

LSHF(FRNC): IEC 60332-1; IEC 60754-2; IEC 61034

Kabelaufbau

Leiter	Cu-Litze, blank Ø 0,42 mm (AWG 27/7)
Isolierung	Foam-Skin Polyethylen, Ø 0,98 mm
Verseilung	2 Adern zum Paar
Paarabschirmung	Aluminium-beschichtete Kunststoff-Verbundfolie
Verseilung zur Seele	4 Paare (PiMF) zur Seele
Gesamtabschirmung	Cu-Geflecht verzinkt (ca. 45 % Bedeckung)
Schutzmantel	PVC oder LSHF, Farbe siehe Typentabelle



UC900 SS27 Cat.7

Mechanische Eigenschaften

Biegeradien	ohne Zugbelastung	≥ 25 mm
	mit Zugbelastung	≥ 50 mm
Betriebstemperaturbereich	ruhend	-20°C bis + 60°C
	bewegt	0°C bis + 50°C

Elektrische Eigenschaften

bei 20°C ± 5°C

Schleifenwiderstand		≤ 340 Ω /km
Widerstandsunsymmetrie		≤ 3%
Isolationswiderstand	(500 V)	≥ 2000 MΩ *km
Kapazität	bei 800 Hz	Nom. 43 nF/km
Kapazitätsunsymmetrie	(Paar/Erde)	≤ 1500 pF/km
Wellenwiderstand	(1-100 MHz)	(100 ± 15) Ω
	(100 - 250) MHz	(100 ± 18) Ω
	(250 - 600) MHz	(100 ± 25) Ω
Relative Ausbreitungsgeschwindigkeit		ca. 79 %
Signallaufzeit		≤ 427 ns/100m
Laufzeitunterschied		≤ 12 ns/100m
Prüfspannung	(DC, 1 min) Ader/Ader und Ader/Schirm	1000 V
Kopplungswiderstand	bei 1 MHz	≤ 25 mΩ /m
	bei 10 MHz	≤ 15 mΩ /m
	bei 30 MHz	≤ 30 mΩ /m

Elektrische Daten (nominal)

gem. Cat.7 (bei 20°C)

F (MHZ)	Attenuation (dB/100m)	NEXT (dB)	PS-NEXT (dB)	ACR (dB/100m)	ELFEXT (dB/100m)	PS-ELFEXT (dB/100m)	Return loss (dB)
1,0	0,3	90	87	90	80	77	23
4,0	0,6	90	87	89	80	77	24
10,0	1,0	90	87	89	80	77	25
16,0	1,3	90	87	89	76	73	25
20,0	1,4	90	87	89	74	71	25
31,2	1,8	90	87	88	70	67	25
62,5	2,6	90	87	87	64	61	23
100,0	3,2	87	84	84	60	57	21
125,0	3,6	85	82	81	58	55	20
155,5	4,0	84	81	80	56	53	19
175,0	4,3	83	80	79	55	52	19
200,0	4,6	82	79	77	54	51	18
250,0	5,1	81	78	76	52	49	18
300,0	5,6	80	77	74	50	47	17
450,0	6,9	77	74	70	47	44	17
600,0	7,9	75	72	67	44	41	17
750,0	8,7	73	70	64	42	39	
900,0	9,7	72	69	62	41	38	
1000,0	10,2	71	68	61	40	37	



UC900 SS27 Cat.7

Technische Angebotsdaten

Artikelnummer	Kurzbezeichnung	Produktname	Farbe	Außen- durch- messer mm	Brandlast		Gewicht kg/km	Cu- Zahl	Zugkraft N
					MJ/km	kWh/m			
CD2744835	Li-02YSCY 4x2x0,42L PiMF	UC900 SS27 Cat.7 S/FTP 4P	Blau	5,9	383	0,106	37	24	100
CD7677650 CD7677651 CD7677652 CD7677653 CD7677654 CD7677655 CD7677656	Li-02YSCH 4x2x0,42L PiMF FRNC	UC900 SS27 Cat.7 S/FTP 4PLSHF	Orange Schwarz Rot Grün Blau Grau Gelb		349	0,097	39		

TM21 Series RJ45 Shielded Plugs

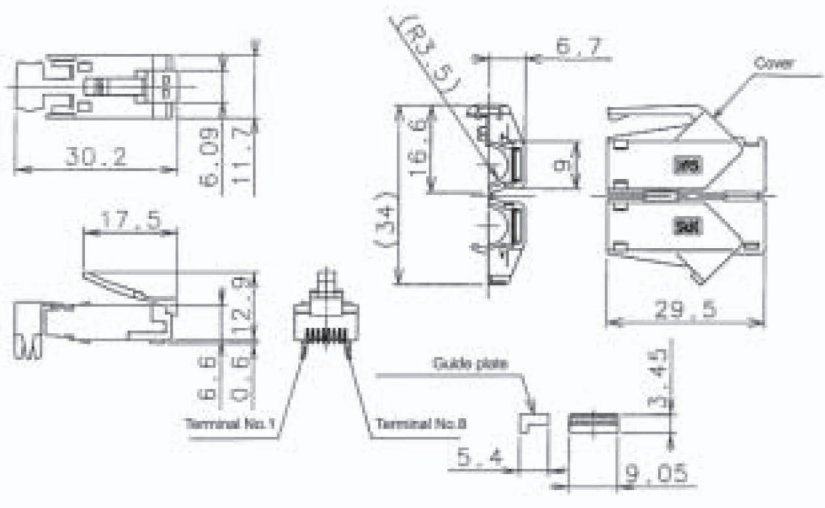
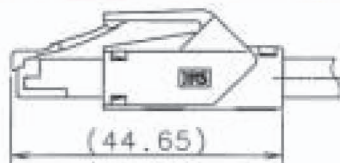
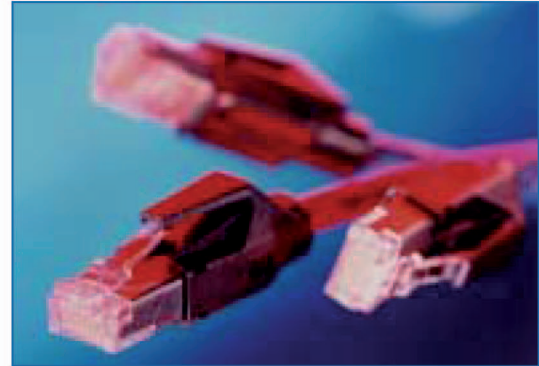


TM21 plugs are designed to meet all of the performance requirements of Cat 6 when link tested up to 250 MHz Class E. These shielded RJ45 plugs have a guide plate to assist assembly onto either solid or stranded cables. The hood is available in nine different colours, incorporates latch protection and can be fitted after the plug has been assembled onto the cable.

FEATURES

- Link tested to Cat 6.
- Fully shielded.
- Fold up hood incorporates latch protector.
- Plug can be terminated to solid or stranded cable.
- Guide plate allows easy assembly.
- Hoods available in 9 colours.
- Will accept cables up to 6.6mm dia.
- Hand tool terminates TM21 in one easy operation.

TM21 Plug - TM21P-88P(**)



PART NUMBERS

Part No	CL Code	Colour	Packaging	Note
TM21P-88P	222-2862-9	Light Beige	Pack (1 pack = 300 pcs)	Plug, Cover & Guide Plate
TM21P-88P(02)	222-2862-9-02	Medium Grey	Pack (1 pack = 300 pcs)	Plug, Cover & Guide Plate
TM21P-88P(03)	222-2862-9-03	Black	Pack (1 pack = 300 pcs)	Plug, Cover & Guide Plate
TM21P-88P(04)	222-2862-9-04	Light Grey	Pack (1 pack = 300 pcs)	Plug, Cover & Guide Plate
TM21P-88P(05)	222-2862-9-05	Red	Pack (1 pack = 300 pcs)	Plug, Cover & Guide Plate
TM21P-88P(06)	222-2862-9-06	Green	Pack (1 pack = 300 pcs)	Plug, Cover & Guide Plate
TM21P-88P(07)	222-2862-9-07	Blue	Pack (1 pack = 300 pcs)	Plug, Cover & Guide Plate
TM21P-88P(08)	222-2862-9-08	Yellow	Pack (1 pack = 300 pcs)	Plug, Cover & Guide Plate
TM21P-88P(09)	222-2862-9-09	Orange	Pack (1 pack = 300 pcs)	Plug, Cover & Guide Plate

TM21 plugs, covers and guide plates are also available separately as a packaged item.

IMPORTANT NOTICE: In the interest of development Hirose Electric reserves the right to amend, without notice, details contained within this document. **Please contact your local Hirose sales office for the latest information.**

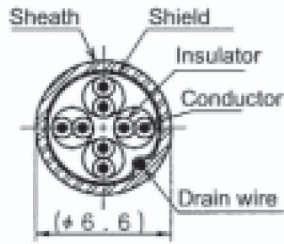




TM21 Series - RJ45 Shielded Plugs



CABLE SPECIFICATIONS



Conductor	φ0.5mm solid wire AWG 24 twisted wire (φ0.2mm x 7) AWG 25 twisted wire (φ0.18mm x 7)
Insulator Outer Dia.	(φ0.9 - 1.0mm)
Drain Wire	AWG 26 (tinned wire)
Seath Outer Dia.	(φ6.6mm)

TECHNICAL DATA

Rating: Current 0.5A Voltage AC 125V	Ambient Temperature Range: Plug -25°C to +60°C
--	---

Item	Standard	Condition
Insulation Resistance	100MΩ or more	Measure with DC 100V
Withstand Voltage	Without flashing, insulation perforation	AC 500V for 1 min
Contact Resistance	230mΩ or less	Measure with 100mA
Vibration Resistance	Without electric breaks of 5μ sec or longer; contact resistance of 250mΩ or less	10 - 55Hz, half amplitude 0.75mm, 2 hours in 3 directions
Mechanical Shock Resistance	Without electric breaks of 5μ sec or longer; contact resistance of 250mΩ or less	Acceleration 490m/s ² , duration 11ms, 3 times in 3 directions
Near-End Crosstalk	30.1dB or greater (when measured at the channel link)	Measure properties between each pair with 250MHz
Sampling Lifetime	Contact resistance of 250mΩ or less	200 times
Temperature Cycle	Contact resistance of 250mΩ or less; insulation resistance of 100MΩ or greater	(-55°C: 30 min → 5 to 35°C: 5 min → 85°C: 30min → 5 to 35°C: 5 min) 5 cycles
Humidity Resistance	Contact resistance of 250mΩ or less; insulation resistance of 1MΩ or greater (in humid conditions); insulation resistance 100MΩ or greater (dry conditions)	Kept for 500 hrs in 40°C, 90 to 95% humidity conditions
Salt & Water Spray	Contact resistance of 250mΩ or less	Kept for 48 hrs in a 5% concentration salt water solution

APPLICABLE TOOLING



Handtool

Hirose offers tooling to suite all production volumes. Hand tooling conveniently allows termination on site or in the factory environment, whilst the T12 press & applicator only requires mains electricity and lends itself to high volume production in the factory. Both tools terminate the plugs in one operation and come with all the parts needed to allow conversion to terminate Hirose TM11 (Cat 5E) plugs.

Applicator



T12 Press



For the latest information and availability please contact your local sales office.

Hirose Electric UK Ltd

Crownhill Business Centre, 22 Vincent Avenue, Crownhill, Milton Keynes, MK8 0AB, UK

Tel: +44 (0)1908 305400 • Fax: +44 (0)1908 305401 • E-mail: sales@hirose.co.uk • Web: www.hirose.co.uk

