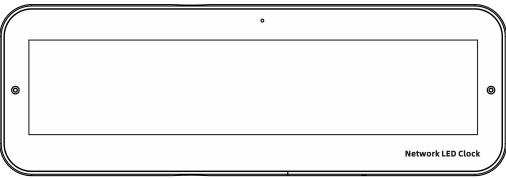


INSTALLATION GUIDE

Network LED Clock GEN-3102A03



www.sponcomm.com

Preamble

• About This Document

- This guide provides essential safety and usage instructions for network audio products, intended for users, installers, and maintenance personnel.
- The Company reserves the right to update this document without notice. Changes will be reflected in future versions. While efforts are made to ensure accuracy, technical details, functions, and descriptions are subject to final interpretation by the Company.
- Please read all sections before use. This document applies to multiple product models; refer to the actual product for specific features and appearance.

Safety Instructions for Use

• Transportation Requirements

- **Packaging:** Always use the original packaging or equivalent protective materials to prevent damage during transit. Ensure the product is securely fixed inside the packaging.
- **Handling:** Avoid dropping, shaking, or subjecting the product to excessive force.
- **Environment:** Do not expose the product to extreme temperatures, moisture, or direct sunlight during transportation.

• Storage Requirements

- **Temperature and Humidity:** Store the product in a dry environment with a temperature range of -20°C to 60°C (-4°F to 140°F) and humidity below 85% RH.

- **Placement:** Avoid stacking heavy objects on top of the product. Store it in a clean, dust-free area away from corrosive substances. Power Off: Ensure the device is fully powered off before long-term storage.

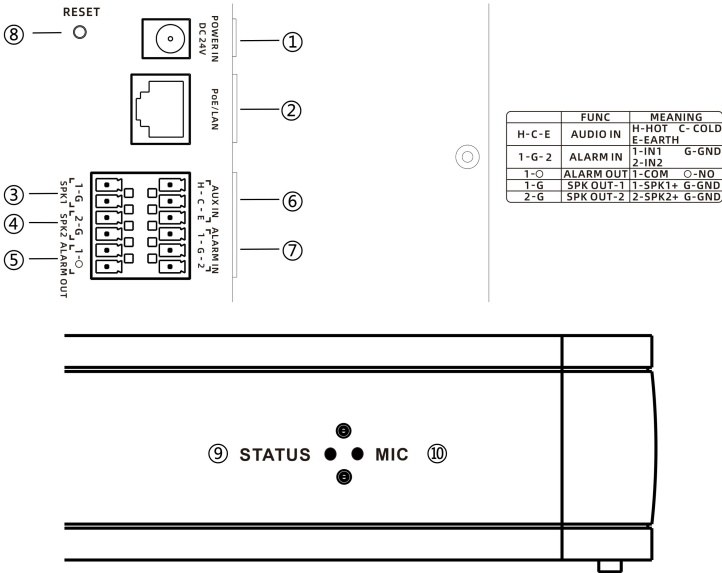
○ Installation Requirements

- **Location:** Install the product in a well-ventilated area, away from heat sources, moisture, and flammable materials.
- **Mounting:** Follow the installation guide to securely mount the device on a wall or surface. Use only the provided mounting accessories.
- **Power Supply:**
 - Use a DC 24V power adapter with the correct specifications or a compatible PoE (Power over Ethernet) injector/switch compliant with IEEE 802.3af/at standards.
- **Ensure cables are routed to avoid tripping hazards or physical damage.**

○ Operation Requirements Environment

- **Safety:** Do not touch the device with wet hands. Avoid handling cables during thunderstorms to prevent electric shock. Power Management: Ensure proper grounding and avoid overloading power circuits.

Device terminal

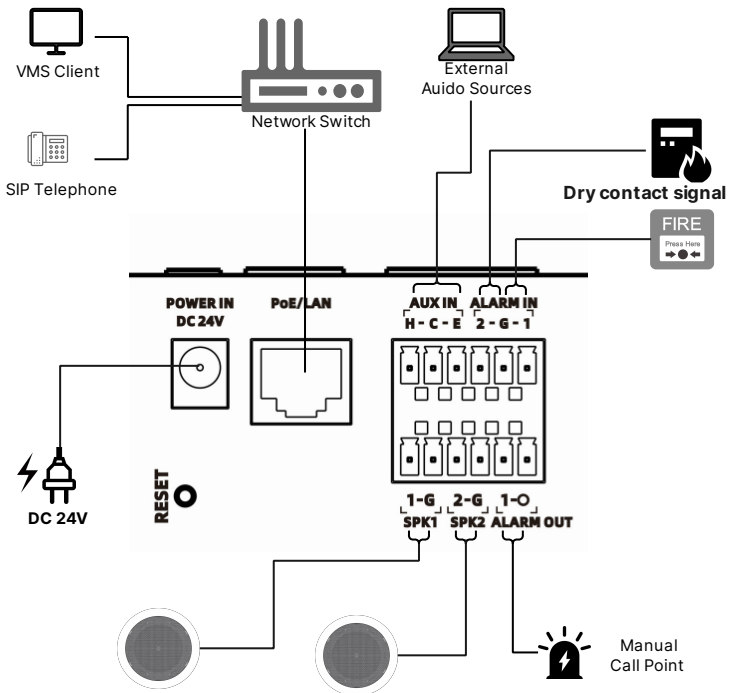


- ① **Power Input:** Supports DC 24V power supply
- ② **RJ45 Connector:** Supported only with POE power supply.
- ③ **Speaker Output 1#Terminal:** Supports a 30W, 8Ω speaker
- ④ **Speaker Output 2#Terminal:** Supports a 30W, 8Ω speaker.
- ⑤ **Alarm Output Terminal:** When a relevant task is received, it can trigger a short-circuit output signal
- ⑥ **Line/Mic Input Terminal:** Connects with a microphone or sound source device
- ⑦ **Alarm Input Terminal:** Used for receiving external dry contact signal triggers. Configurable Interlinked Tasks, including: Pattern, SIP/P2P Calls, Broadcast Disable.
- ⑧ **Reset Button:** Press and hold the reset button for 10 seconds, then release. The device will automatically restart
- ⑨ **Status indicator light:** Status indicator, device startup green light is always on, green light blinking in the task.
- ⑩ **Built-in MIC:** Supports two-way intercom

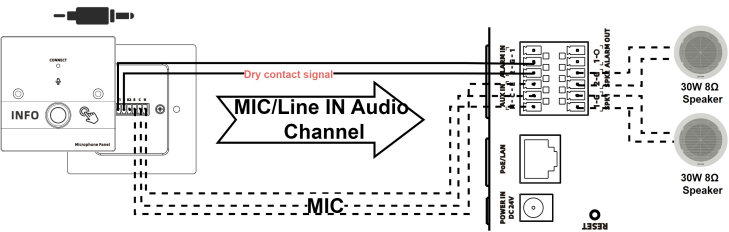
Status Indicator

Device Operation	STATE	SIGNAL
Device startup in progress	●	●
Device startup complete, standby	● Green Continuous green light	●
Reception SIP/P2P/ONVIF	● (Flashing) Green 0.5 - 0.5sec	●
Bluetooth audio input	● (Flashing) Green 0.5 - 0.5sec	● Blue Continuous blue light
LINE /MIC audio input	● (Flashing) Green 0.5 - 0.5sec	● Green Continuous green light (Signal lamp is displayed only when LINE IN is used, and goes out when MIC is used.)
Pattern execution	● (Flashing) Green 0.5 - 0.5sec	●

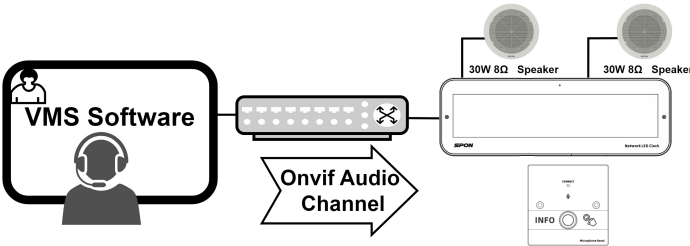
CONNECTION DIAGRAM



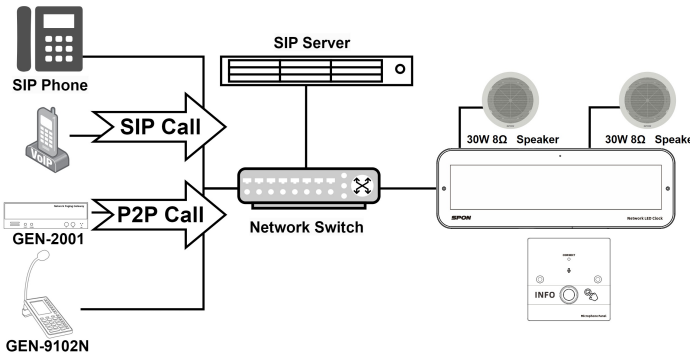
MIC/LINE IN Application



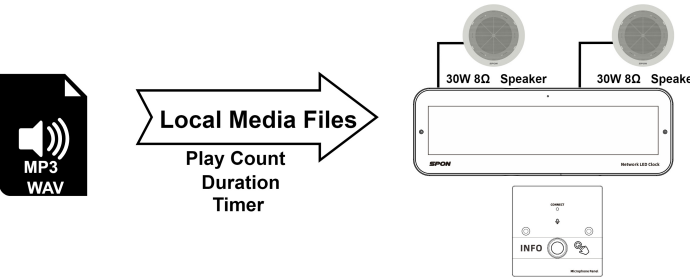
ONVIF Application



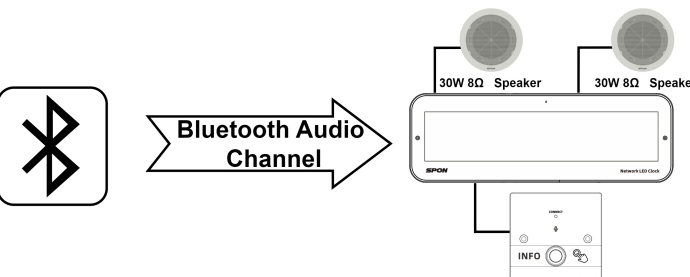
SIP/P2P Application



Local Media Files Application



Bluetooth Audio Application



Device Network Configuration

You can initialize the device and modify the IP address through the IP scanning configuration tool and WEB interface, and this article takes the IP scanning configuration tool as an example. Please contact the technical support to get the installation package, and please refer to the instruction manual of the WEB interface for the operation of the WEB interface.

- The default IP address of the device is 192.168.1.101, you need to make sure that the IP address of your PC is on the same network as the device when you use the WEB page to configure.
- Open the scanning tool and click Quick Scan.

Scan Configuration Tool

Manage

Quick Scan Terminal Configuration Tool

Quick Scan

Designated Scan

Config

Upgrade

Setting

Serial	ID	Device Type	Firmware	Version	Terminal MAC	Terminal IP	Server IP
1	1	GEN-2001	Std_24_EN	V1.0.0	F41535010203	192.168.1.11	192.168.1.13
2	2	GEN-3001	Std_24_EN	V1.0.0	F41535010203	192.168.1.11	192.168.1.13
3	3	GEN-3102	Std_24_EN	V1.0.0	F41535010203	192.168.1.11	192.168.1.13
4	4	GEN-6392	Std_24_EN	V1.0.0	F41535010203	192.168.1.11	192.168.1.13
5	5	GEN-6011	Std_24_EN	V1.0.0	F41535010203	192.168.1.11	192.168.1.13

- Click[⚙️Config] from the sidebar and then check the end devices to be configured.
- Open the scanning tool and click Quick Scan.
- Configure according to on-site requirements: ID, terminal IP, server IP, gateway IP, subnet mask. Click [OK], the configuration will be automatically delivered, and the device will automatically restart after completing the configuration.

Scan Configuration Tool

Manage

Config

Upgrade

Setting

Basic Parameters

Extended Parameters

Terminal MAC	ID	Terminal IP
F41535010203	11	192.168.1.102
Server IP	Gateway IP	Subnet Mask
192.168.1.13	192.168.1.1	255.255.255.0
SIP Server Port	NAS Server Port	Terminal Port
5060	2048	5060
Backup Terminal Port		
2046		

OK

WEB Login Example

- Open the browser, enter the IP address of the device in the address bar, and press Enter.
- Input user name and password, Default username and password are both admin
- Click the Login button to complete the login

← → ↻

http://192.168.1.101/#/login

☰

Default User Name:

admin

➡

User name

Default Password:

admin

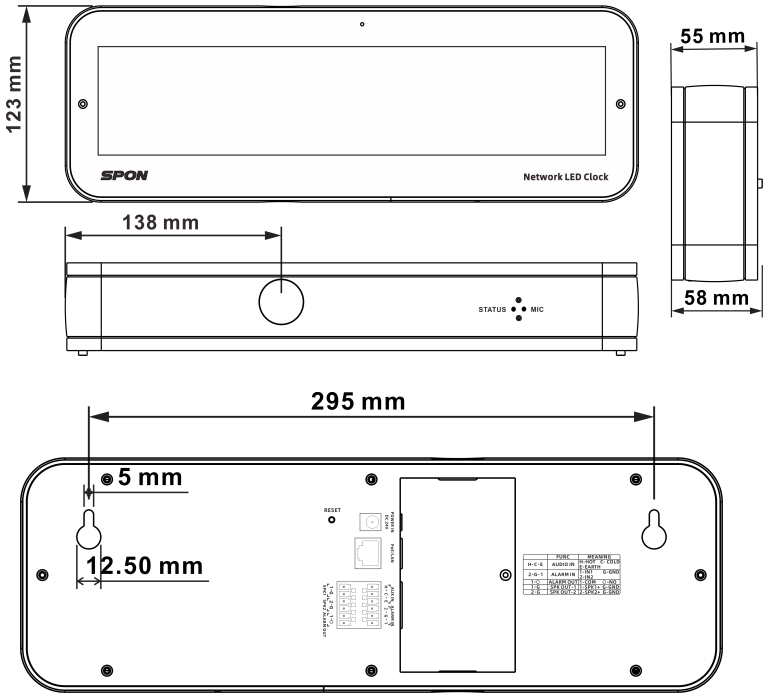
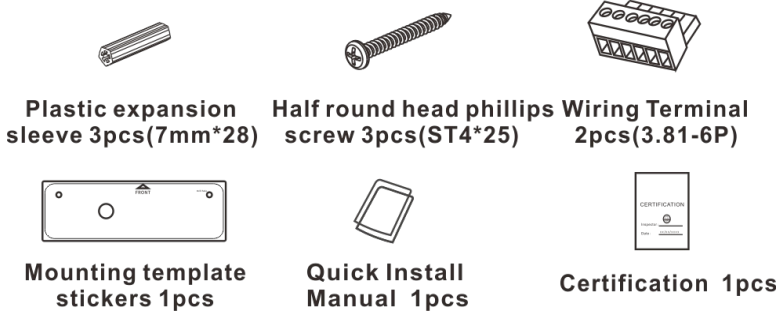
➡

Password

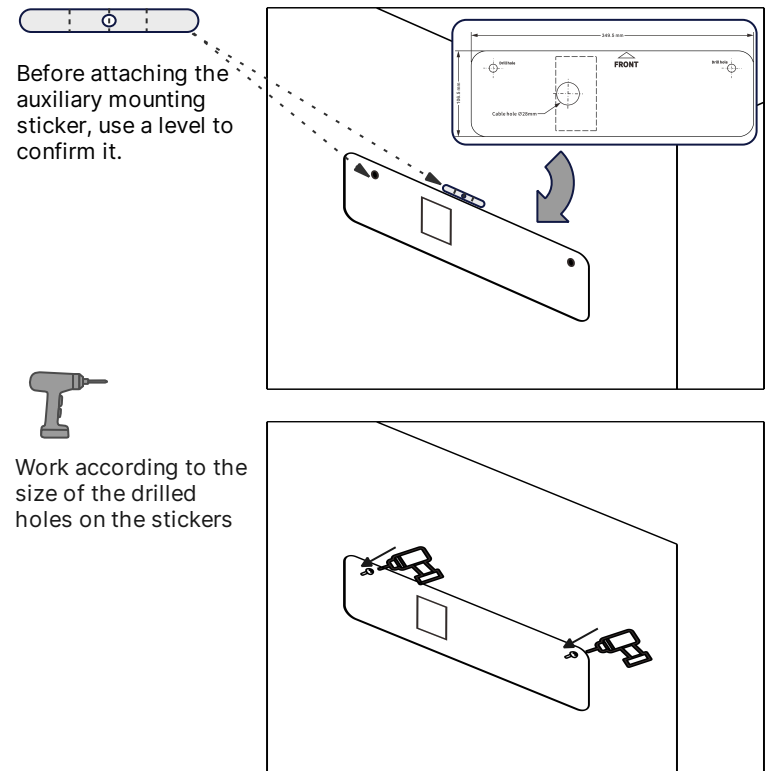
English

Login

Product Packing List& Dimensions



Installation Scenario



Note.
Selection of upper and lower cross-holes according to actual requirements

FAQ

- **Forget IP**
 - Use ip scanning configuration tool to configure parameters
 - Long press the reset button of the device for 5s and then release it, the device will restart automatically after successful reset (IP after reset: 192.168.1.101)
- **Forgot WEB Password**
 - Long press the reset button of the device for 5s and then release it, the device will restart automatically after successful reset (Password after reset: admin)
- **Unable to Log in to the Server**
 - Check whether the IP of the device and the IP of the server can communicate and whether the network cable is good.
 - Check the correctness of the user name or password.
 - Check whether the device account has server-related privileges.

- **Unable to Connect to Bluetooth or Bluetooth Playback Sound Jams**
 - check whether to open the device Bluetooth function (need to go to the device WEB page to open, the default off)
 - Check whether the name of the cell phone connection Bluetooth is correct (you can go to the device WEB page settings)
 - equipment and cell phones or other Bluetooth signal is not good, you can try to try to connect in close proximity.

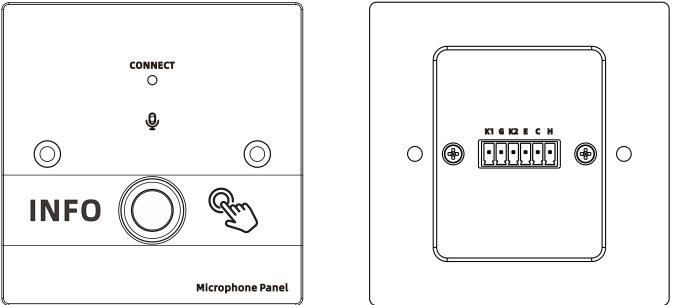
SPON I CHINA

We provide you with more convenient services. Please contact us through the following ways to obtain more information.

- ☎ Tel:+86 731 8557 0190
- 📱 Mob/WhatsApp:+86 138 7314 3517
- ✉ Company Email:inquiry@sponcomm.com
- 📍 Address:No.70, Nantang Road, High-tech Zone, Changsha, China.

Optional accessories

GEN-4101



K1	keypad1
G	GND
K2	keypad2
E	EARTH
C	COLD
H	HOT

Since 2004, SPON has been a leading IP Audio solution provider in China, initially focusing on education and now serving diverse industries like finance, transportation, and public spaces. Our product portfolio includes IP Public Address Systems, IP Intercom Systems, Digital Conference Systems, and Surveillance Microphone Systems, all adhering to international standards such as 3C, CE, SRRC, ISO 9001, and ISO 14001. At SPON Communications, our mission is to be a globally trusted leader in IP audio solutions, delivering innovative and reliable products that meet customer needs and advance intelligent audio communication.

