

# **Mi·Light<sup>®</sup>**

## **User Instruction**

Touch RGB WiFi LED Controller  
Model No.: YL1

Please read the instructions carefully before using the controller.

## 1. Features

The controller is adopted by the most advanced PWM control technology, and has memory function(The light status will keep same as the status before you turn off the light);Wireless and 4G controlled by Mi-light Cloud APP.



Support Amazon  
Alexa Voice Control



WiFi  
Wireless Control



Smart phone  
App control



Compatible with 2.4GHz  
RF Remote Controller



RGB colors to  
choose



Dimmable  
Saturation control



Timing ON/OFF  
the lights



Group control  
randomly by APP



High sensitive and  
Full touch controlling.



16 Color Changing  
modes

## 2. Parameters

Model No.: YL1

Working Voltage: DC12 ~ 24V ( 5.5\*2.1mm)  $\ominus \text{---} \oplus$

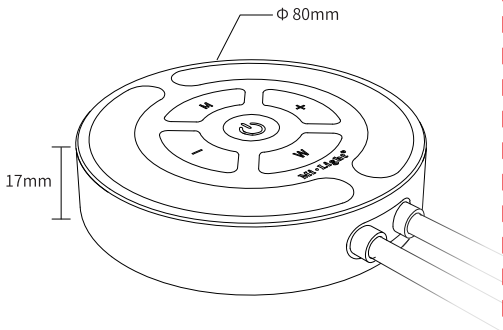
Output Current: Max.3A/Channel (Total output Max.5A)

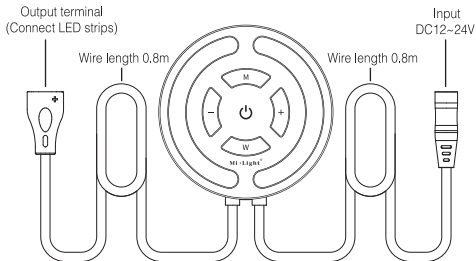
Working Temperature: -20~60°C

Remoter Control Distance: 30m

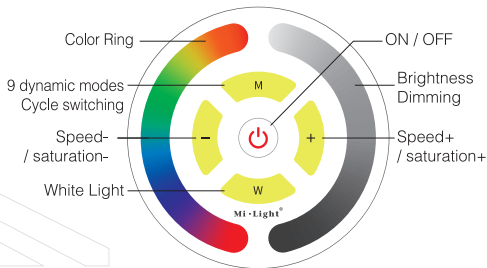
Communication Mode: WiFi-IEEE 802.11b/g/n 2.4GHz  
or 2.4G RF

G.W.: 130g

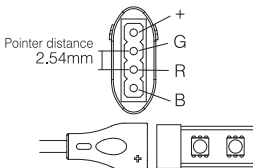
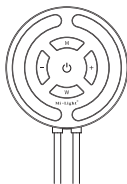




### 3. Controlling Panel Diagram

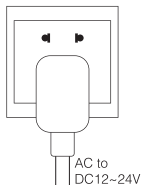


## 4. Connection Instruction



1. Paste the controller on the selected place.

2. Connect the LED strips to the Output terminal.  
(Please purchase LED strips separately)



3. Connect to Power Supply  
AC to DC12 ~ 24V,  
Please select Power Supply according to the data of the LED strips ( Power Supply purchased separately ).

4. Touch the control panel to control the lights.

## 5. Remote Controller

Compatible with these remote controls (Purchased separately). For more details, pls read the remote instruction.



FUT089



FUT092



FUT088



FUT095



FUT096



B8



B4 / T4



B3 / T3



B0



## Attention

1. Please check whether the input voltage of the constant voltage power supply is in accordance with the controller, and please check the connection of both the cathode and anode.
2. The working Voltage is DC12~24V, the controller will be broken if the voltage is higher than 12~24V.
3. Non-professional user cannot dismantle the controller directly, otherwise, it may cause fire and electric shock.
4. The working temperature is -10-60°C; Do not use the device to direct sunlight, moist and other high temperature area.
5. Please do not use controller around the mental area and high magnetic field, otherwise, it will badly affect the control distance.



Made in China

# Mi-Light Cloud APP

## User Instruction

### 1 APP Downloading

**For IOS System:** Pls search "Mi-Light Cloud" on APP store.  
(Above IOS9.0)

**For Android System:** search "Mi-Light Cloud" on Google Play  
(Above Android 5.0) or Scan below QR-code to download APP.



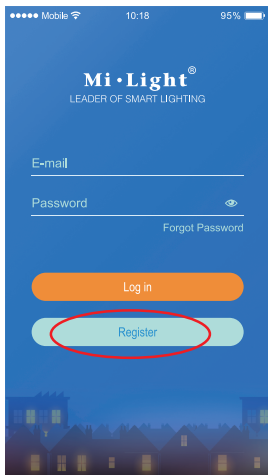
Scan QR Code to Install APP





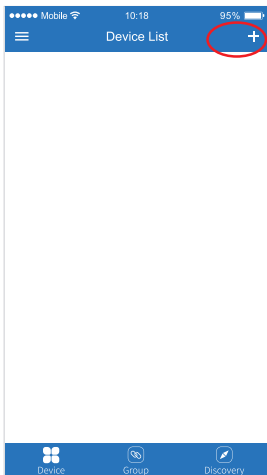
## 2 Register Mi-Light Cloud Account

Open APP and click Register button; Complete the register and log in.



### 3 Add Device

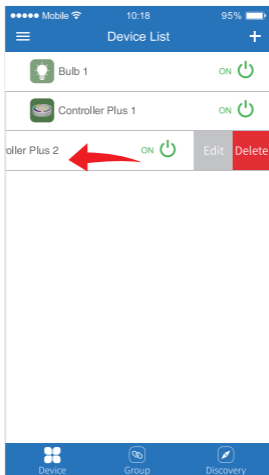
1. Click the right top "+" on the device list.
2. Please select the device type you will add, then complete the adding according to the hint of APP.
3. Back to device list after adding successfully, then refresh list to get the device status.





## 4 Modify device name or delete device

Slide device list to left, click " **Edit** " to modify device name; click " **Delete** " to delete device.

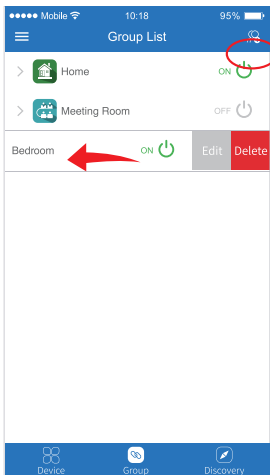
**Note:** If the device was shared to others, then the device will also be deleted on your friends' device list.



## 5 Group Control

1. Click  to switch to Group list, then click the right top  icon on the Group list to create groups.
2. Slide the Group list to left to **Edit/Delete** groups.

**Note:** The group just work on APP Controlling, cannot work on Voice control. Please open Amazon APP for Group Voice control.

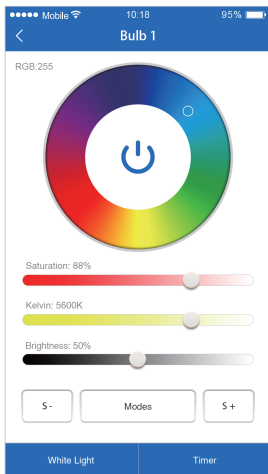


## 6 APP Control

Click the device or group that you want to dim on device list and group list into Dimming Interface.

 Click Speed+ under dynamic mode

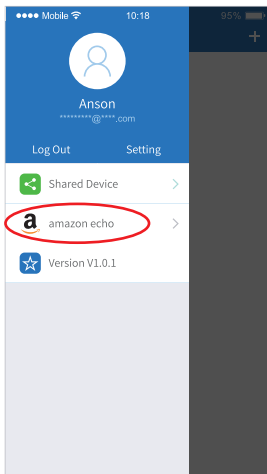
 Click Speed- under dynamic mode.



## 7 Amazon echo Voice Control

Click left top "☰" icon on the home page

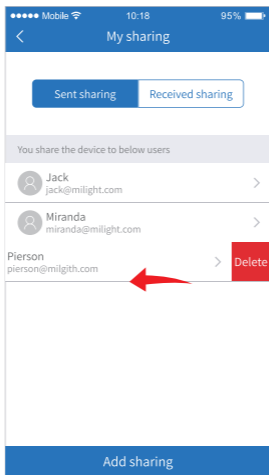
Then click "amazon echo" to check detailed instructions



## 8 Sharing Device

Share the device to friends, Let your friends can control this device.

1. Click the left top "☰" icon on the home page.
2. Click "👤 Shared Device" to My sharing, then click "Add sharing"  
(Note: the receiving sharing device cannot be shared again).
3. Click "👤 Jack jack@milight.com" to edit sharing, slide to left to delete sharing.





ios



android



alexa