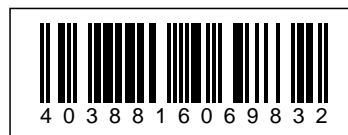


Synergy 21 LED remote smart panel RGB-WW (RGB-CCT) 8 zones *Milight/Miboxer*



Experience the ultimate control over your lighting with the **8-Zone Wireless RGB-CCT Smart Panel Remote Controller**. This innovative control panel gives you the ability to control your RGB-CCT lighting precisely and flexibly, ideal for modern living and working areas.

The **8-Zone Wireless RGB-CCT Smart Panel Remote Controller** works with a voltage of 3V, powered by two AAA batteries (not included), as well as a DC3.3V power source. With a transmission frequency of 2400-2483.5MHz and the GFSK modulation method, the Smart Panel ensures a stable and reliable connection to your lighting devices. The transmission power of 6dBm enables a control range of up to 30 metres, so you can conveniently adjust your lighting from a distance.

This smart panel is characterised by an extremely low standby power consumption of only 20uA, which ensures a long battery life. The compact and elegant design with a size of 106*146*20mm blends seamlessly into any environment and offers a user-friendly interface for easy operation.

With the **8-Zone Wireless RGB-CCT Smart Panel** you can control up to eight different zones independently of each other. This gives you the freedom to create different lighting scenarios for different areas of your home or office. Whether warm white light for a cosy atmosphere or bright white for concentrated work, this smart panel gives you full control.

Enjoy the benefits of this advanced technology that gives you precise and flexible lighting control. Order the **8-Zone Wireless RGB-CCT Smart Panel Remote Controller** now and transform your lighting experience. Create the perfect lighting mood for any occasion and make your home or office smarter and more comfortable.

8-zone wireless RGB-CCT Smart Panel

Remote Controller
Working Temperature: -20 - +60°C
Voltage: 3V(2*AAA Battery), DC3.3V
Transmission Frequency: 2400-2483.5MHz
Modulation Method: GFSK
Transmitting Power: 6dBm
Control Distance: 30m
Standby Power: 20uA
Panel Size: 106-146*20mm

Requires 2 AAA batteries, not included

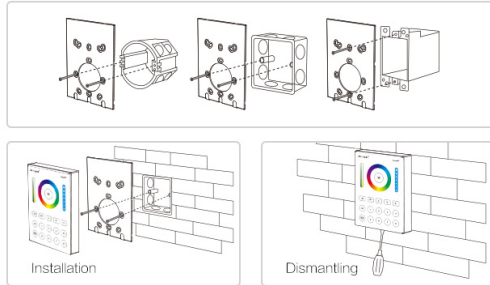
Attributes

Attribute	Value
Grösse:	106*146*20
Lichtfarbe:	RGB-WW
Weight:	0.3 Kg
Warranty:	24.00 Months

Additional Images



Installation Diagram



8 zones control, solve your problem of lacking zones

Many zones, control independently, satisfy all your requirement.
One remote is enough to control different area.



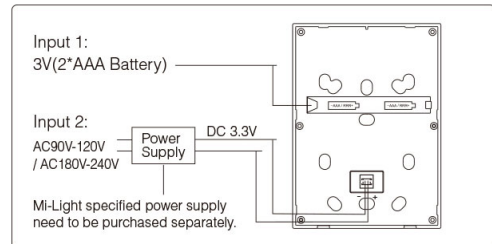
Sensitive Touching

High precision touching IC,
touching is more stable and sensitive



Two power supply mode

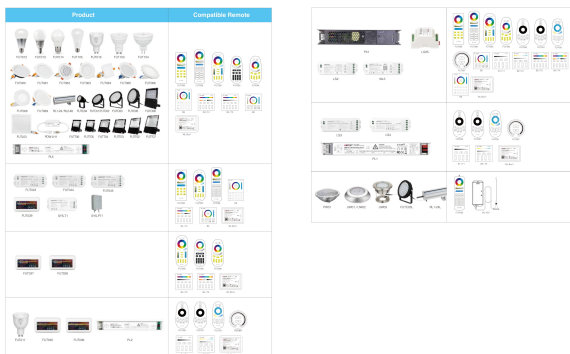
Two power supply mode, you can choose battery powered or electricity powered.



3.3V Power Supply
2 kinds electricity
Input Voltage: AC90V-120V
AC180V-240V
Output Voltage: DC3.3V



COMPATIBLE REMOTE SHEET



Accessories

Part No.	Name
147689	Batterien Micro AAA 1,5V *Duracell* Industrial 10er Pack
151265	Synergy 21 LED remote smart panel B8 power supply *Milight/Miboxer*
147979	Synergy 21 LED Panel round 12W RGB-WW with RF and WLAN *Milight/Miboxer*
148008	Synergy 21 LED garden lamp 9W RGB-WW with RF and WLAN IP65 24V *Milight/Miboxer*
147946	Synergy 21 LED Panel round 6W RGB-WW with RF and WLAN *Milight/Miboxer*
148013	Synergy 21 LED floodlighter 10W RGB-WW (RGB-CCT) IP65 24V *Milight/Miboxer*
147980	Synergy 21 LED panel round 15W RGB-WW with RF and WLAN IP54 *Milight/Miboxer*
148017	Synergy 21 LED floodlighter 20W RGB-WW (RGB-CCT) IP65 230V *Milight/Miboxer*
148010	Synergy 21 LED garden lamp 9W RGB-WW with RF and WLAN IP65 230V *Milight/Miboxer*
148113	Synergy 21 LED floodlight 50W RGB-WW (RGB-CCT) IP65 230V *Milight/Miboxer*
148015	Synergy 21 LED floodlighter 10W RGB-WW (RGB-CCT) IP65 230V *Milight/Miboxer*
148018	Synergy 21 LED floodlighter 30W RGB-WW (RGB-CCT) IP65 230V *Milight/Miboxer*