

Datasheet (GL-X3000)

Meet Spitz AX

- Wi-Fi 6 Dual-SIM 4G/5G Cellular Gateway



GL-X3000 is a Wi-Fi 6 4G/5G Dual-SIM Cellular Router designed to provide a reliable network for recreational vehicles in remote locations or high speed cellular internet in urban areas. It offers an internet speed of 574Mbps (2.4GHz) and 2402Mbps (5GHz), with a combined maximum Wi-Fi bandwidth of 3000Mbps. It has configurable Multi-WAN, Load balancing, and Failover options between the WAN ports, SIM Card, and Repeater.

GL-X3000 is equipped with six interchangeable SMB external antennas, providing a versatile customization option for users to optimize the performance of 4G LTE, 5G NR, Wi-Fi, and GPS.

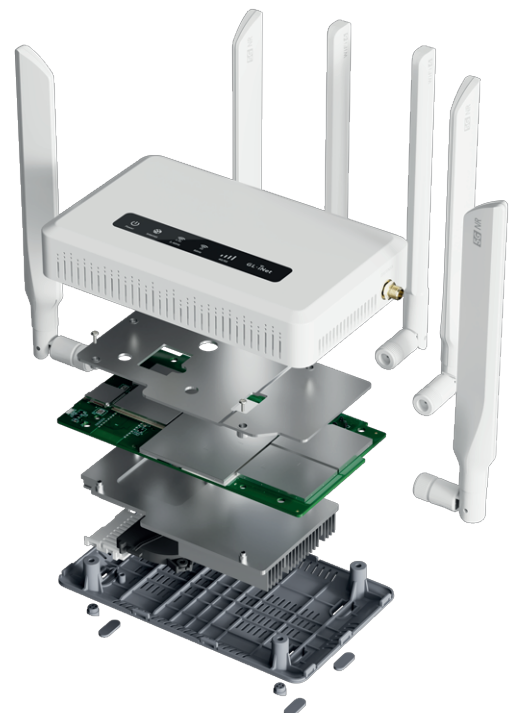
Highlights

5G NR Connectivity

GL-X3000 features CAT19 5G NR (New Radio) cellular connectivity, delivering a powerful boost in potential download speeds compared to 4G LTE at a reduced latency. Additionally, 5G's MMTC (Massive Machine-Type Communications) technology supports high network density connections, effectively reducing delays and interruptions caused by interference.

4G LTE Connectivity

GL-X3000 features CAT16 4G LTE cellular connectivity, maintaining an active connection while vehicles are in motion, and ensuring high-speed and reliable internet access when traveling to remote locations where 5G network infrastructure may be limited.



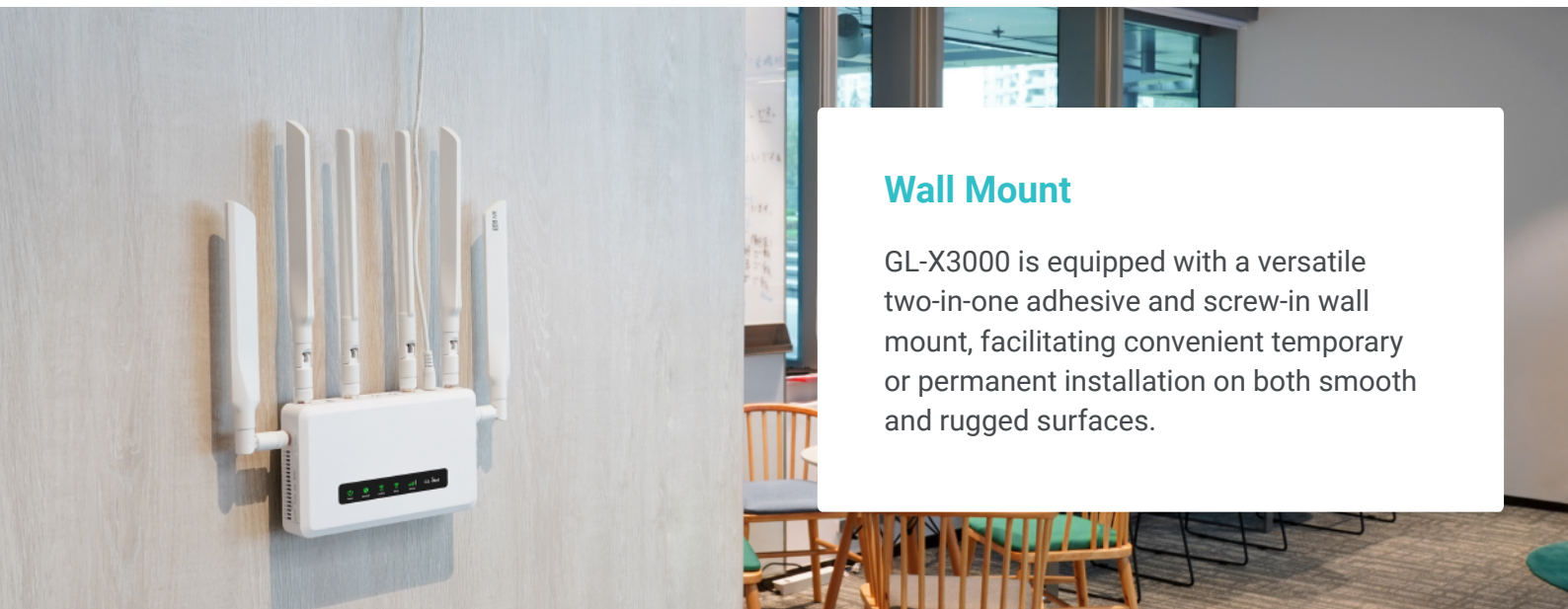
Interchangeable Antennas

GL-X3000 is equipped with six SMB (SubMiniature version B) connectors, providing the flexibility to integrate different types of external antennas for optimizing the device towards specific application scenarios.



Wi-Fi 6 802.11ax

GL-X3000 supports the Wi-Fi 6 802.11ax standard, delivering exceptional mass device connectivity performance. It is equipped with a series of network technologies including MU-MIMO to simultaneously process multiple data streams in high-density networks, and OFDMA for efficient and low-latency data throughput.



Wall Mount

GL-X3000 is equipped with a versatile two-in-one adhesive and screw-in wall mount, facilitating convenient temporary or permanent installation on both smooth and rugged surfaces.

Multi-WAN, Load-Balancing, Failover

GL-X3000 features Multi-WAN for increased bandwidth and better network stability, Load-balancing for optimizing bandwidth usage and avoiding network congestion, and cellular Failover to ensure an uninterrupted network. For each option, users are able to configure the priority of each connection type including Ethernet, Cellular, and Repeater.

Specifications

HARDWARE	
CPU	MediaTek Dual-core MT7981A, @1.3GHz
Memory / Storage	DDR4 512 MB / 8GB eMMC
Wi-Fi	802.11 a/b/g/n/ac/ax, 574Mbps (2.4GHz) 802.11 a/b/g/n/ac/ax, 2402Mbps (5GHz)
External Antennas	6 x Optional Antennas (4 for 4G LTE/5G NR, 2 for Wi-Fi)
External Speed	WAN Port: 10/100/1000/2500Mbps LAN Port: 10/100/1000 Mbps
Exterior Material	ABS + PC
Dimension / Weight	155 x 95 x 36mm / 520g
SOFTWARE FEATURES	
Operating System	OpenWrt 21.02 (Kernel version 5.4)
Network mode	Routing, AP, Wireless Bridge, Wired Bridge
Ethernet Dialing Mode	DHCP, Static, PPPoE
Repeater Mode	Scans and connects to SSID Connects to hidden SSID
4G/5G Modem	Sets AT command Automatic / Manual setting Receives SMS Display signal strength
Optional GPS	View current and historical location data

Wireless Configuration	Switching on and off wireless AP Modifying and hiding SSID Modifying encryption mode and password Channel modification Bandwidth modification Modifying transmission power Guest SSID
Display Flow Statistics <i>(Cloud Platform Required)</i>	Display product model, name, IP address, MAC address Current rate Flow statistics QoS settings
Client List	Show current connected clients Disable a client (no internet access)
Firewall Function	Port forwarding, open port, DMZ
VPN	OpenVPN client & server WireGuard client & server Maximum OpenVPN Speed: 150Mbps Maximum WireGuard Speed: 300Mbps Policy routing
System Function	Restart Restore factory settings Change IP address range on LAN side Change time zone MAC address clone Encrypted DNS DDNS Cloud remote management Remote web management Remote SSH management Installing / uninstalling packages Drop-in Gateway mode Multi-WAN

INTERFACE

Ethernet Port	1 x 2.5G WAN, 1 x 1G LAN
TF Card Slot	TF card, maximum 1TB
SIM Card Slot	2 x Nano SIM card (12.3mm x 8.8mm)
USB Port	USB2.0 Type-A
LED Indicator	System / 5G WiFi / 2.4G WiFi / Internet / Cellular Signal Strength
Reset Button	Press (>3s, <8s) restores network settings to device initial state Long press (>=8s) restores factory settings
Power Port	DC, 9-36V

CERTIFICATION

- CE
- RoHs
- WEEE
- CP65
- FCC
- UKCA
- IC

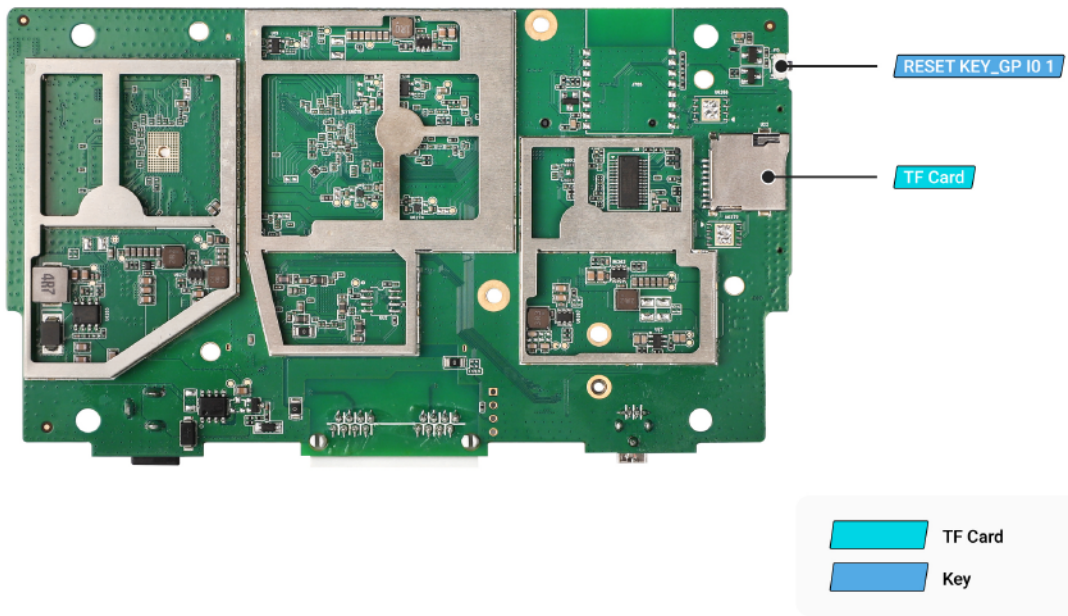
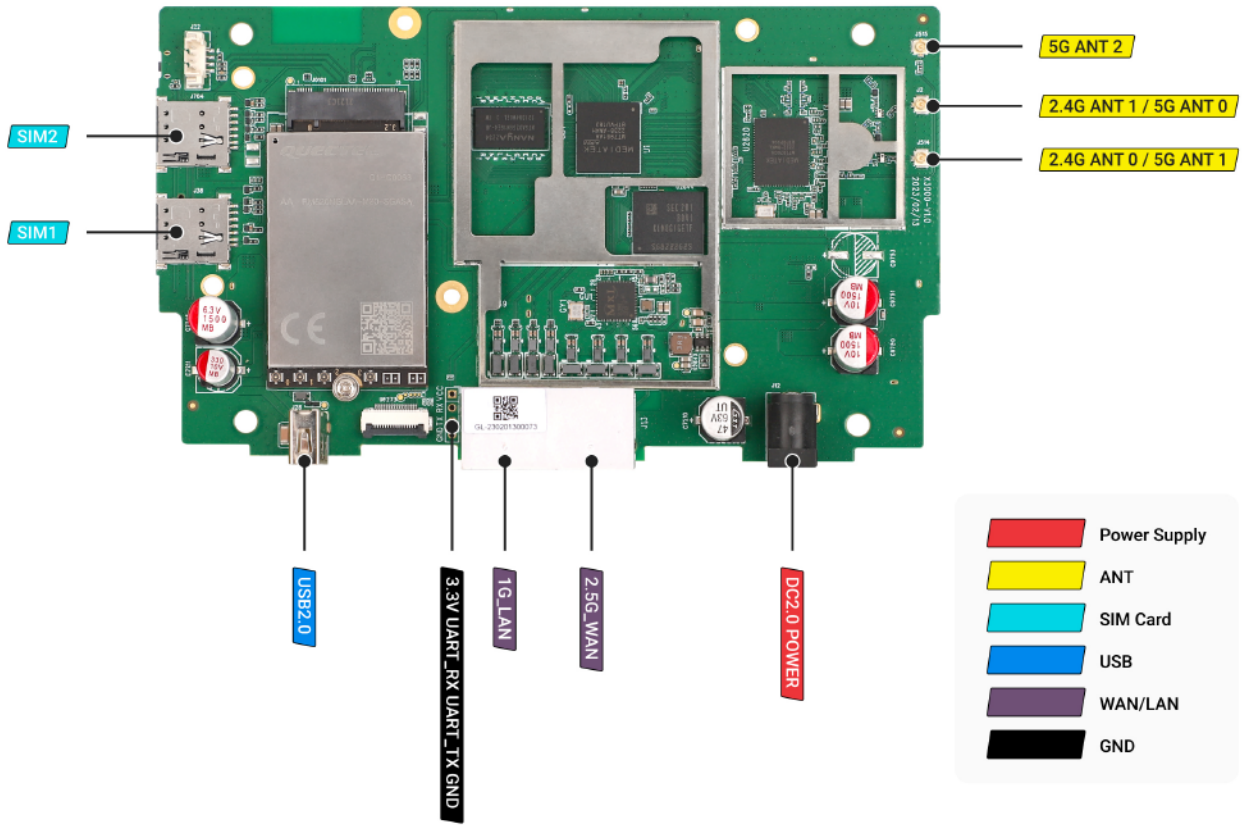
ENVIRONMENT

Operating Temperature	0 ~ 40°C (32 ~ 104°F)
Storage Temperature	-20 ~ 70°C (-4 ~ 158°F)
Operating Humidity	5%~95%, non-condensing
Storage Humidity	5%~95%, non-condensing

PACKAGE LIST

- 1 x GL-X3000 Router
- 1 x Power Adapter
- 2 x Wi-Fi Antennas
- 4 x 5G NR / 4G LTE Antennas
- 1 x Ethernet Cable
- 1 x User Manual
- 1 x Warranty Card
- 1 x Wall Mount Kit

PINOUT



CONTACT US

GL TECHNOLOGIES (HONG KONG) LIMITED

Unit 601, 6/F, Enterprise Place, 5 Science Park West Avenue, Hong Kong Science Park, Pak Shek Kok, N.T., Hong Kong

WEBSITE www.gl-inet.com | E-MAIL sales@gl-inet.com