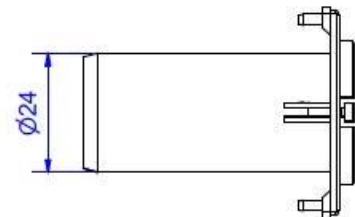
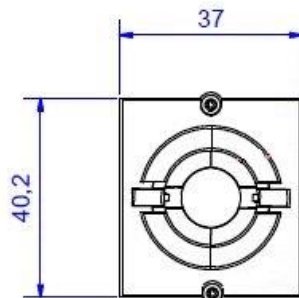
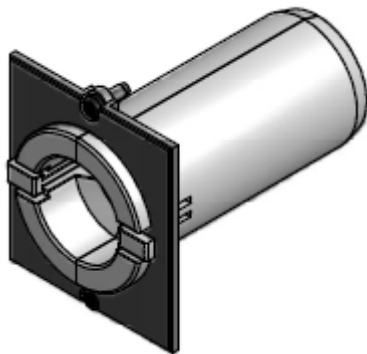


Skizze / drawing



Custom Modul - Kabeldurchführung LAN	Custom module – cable pipe LAN
<b>Material:</b> <ul style="list-style-type: none"> <li>• Polyamid PA6 GF 30</li> </ul>	<b>Material:</b> <ul style="list-style-type: none"> <li>• Polyamide PA6 GF 30</li> </ul>
<b>Abmessungen</b> in mm: <ul style="list-style-type: none"> <li>• Siehe Abbildung</li> <li>• Für Kabel bis 11 mm Durchmesser</li> </ul>	<b>Measurements</b> in mm: <ul style="list-style-type: none"> <li>• See figure</li> <li>• For cable diameter up to 11 mm</li> </ul>
<b>Lieferform:</b> <ul style="list-style-type: none"> <li>• Im Polybeutel verpackt</li> </ul>	<b>Packing:</b> <ul style="list-style-type: none"> <li>• In polybag</li> </ul>
<b>Lieferumfang:</b> <ul style="list-style-type: none"> <li>• 1x Custom Modul Blende</li> <li>• 1x zweiteilige Kabeldurchführung</li> <li>• 2x T6 Torx Schraube zur Montage</li> </ul>	<b>Extent of delivery:</b> <ul style="list-style-type: none"> <li>• 1x Custom module cover</li> <li>• 1x cable pipe two-piece</li> <li>• 2x T6 torx screws for mounting</li> </ul>