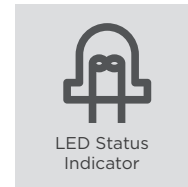
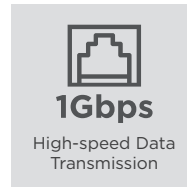
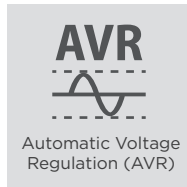
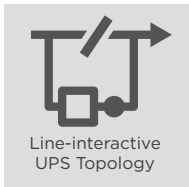




ENERGY-SAVING TOWER UPS



Energy-saving UPS systems help to save power consumption

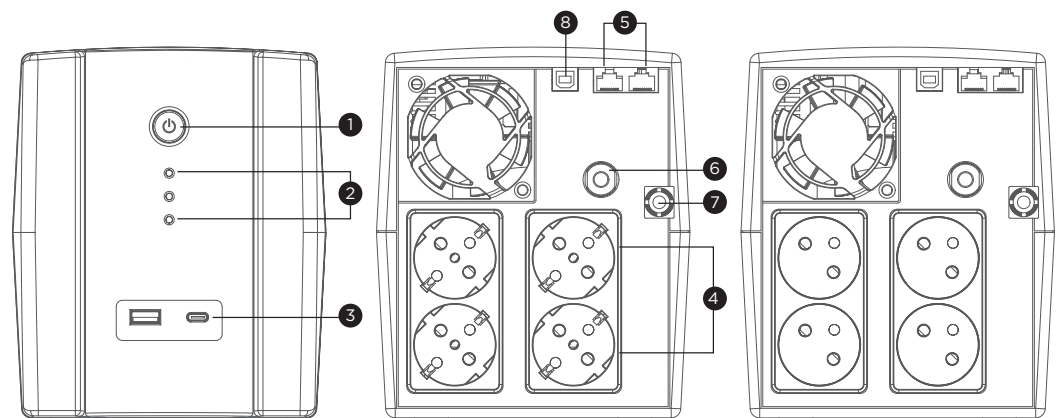
Designed for home and office applications, the UT Series adopts line-interactive topology with Automatic Voltage Regulation (AVR) function to offer stabilized AC power output. The patented GreenPower UPS™ Bypass design achieves ultra-low power consumption to reduce energy costs. The LED indicator shows the utility, battery and operating status of the UPS. Other features include overload protection, EMI filter and configurable alarm to safeguard your devices.

SERIES FEATURES

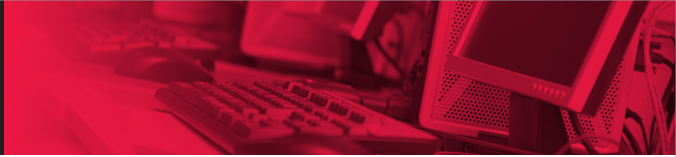
- Energy Saving Technology
- Automatic Voltage Regulation (AVR)
- Generator Compatible
- LED Status Indicator
- USB Charging Port(s)
- Overload Protection
- Surge and Spike Protection
- Phone/Fax/Modem/DSL/Network Protection
- High-speed Ethernet Data Transmission
- USB Connectivity Port
- PowerPanel Management Software
- Configurable Alarm
- EMI and RFI Filtration

PRODUCT CALLOUTS

- 1 . Power On/Off Switch
- 2 . LED Status Indicators
- 3 . USB Charging Port
- 4 . Battery Backup & Surge Protected Outlets
- 5 . Communication Protection Ports RJ11/RJ45
- 6 . Input Circuit Breaker
- 7 . AC Input Power Cord
- 8 . USB Port



UT1500/2200EG



TECHNICAL SPECIFICATIONS

Model Name	UT1500EG	UT2200EG
General		
UPS Topology	Line-interactive	
Energy Saving Technology	GreenPower UPS™ Bypass Technology	
Input		
Generator Compatibility	Yes	
Nominal Input Voltage (Vac)	230 ± 10%	
Input Voltage Range (Vac)	167 - 295	
Input Frequency (Hz)	50, 60	
Input Frequency Detection	Auto-sensing	
Rated Input Current (A)	6.52	10
Input Connector Type	Schuko	
Output		
Capacity (VA)	1500	2200
Capacity (Watts)	900	1320
On Battery Waveform	Simulated Sine Wave	
On Battery Voltage(s) (Vac)	230 ± 10%	
On Battery Frequency (Hz)	50 ± 1%, 60 ± 1%	
Automatic Voltage Regulation (AVR)	Single Boost, Single Buck	
Overload Protection	Internal Current Limiting, Circuit Breaker	
Outlet(s) - Total	4	
Outlet Type	Schuko x 4 or FR x 4	
Outlet(s) - Battery & Surge Protected	4	
Typical Transfer Time (ms)	4	
USB Charging Port(s)	USB-A x 1, USB-C x 1	
USB Charging Current	5V/2.1A	
Battery		
Runtime at 60W (min)	90	95
Runtime at 90W (min)	60	70
Runtime at 200W (min)	27	34
Typical Recharge Time (Hours)	8	
User-replaceable	No	
Battery Type	Sealed Lead-acid	
Replacement Battery Pack (RBP)	RBPO089	RBPO090
Replacement Battery Pack (RBP) Quantity (pcs)	2	
Surge Protection & Filtering		
Surge Suppression (Joules)	150	
EMI/RFI Filtration	Yes	
Phone/Network Protection RJ11/RJ45 (Combo)	1-in, 1-out	
Management & Communications		
LED Indicators	Power On, Line Mode, Battery Mode, Bypass Mode, Low Battery, Overload, UPS Fault	
HID Compliant USB Port(s)	1	
Audible Alarms	Battery Mode, Low Battery, Overload, UPS Fault	
Ethernet Data Transmission Speed	Up to 1Gbps	
Power Management Software	PowerPanel Personal (Recommended)	
Form Factor	Tower	
Physical Size - UPS Module		
Dimensions (WxHxD) (mm.)	148 x 178 x 298	
Weight (kg.)	9.1	10.8
Environmental		
Operating Temperature (°C)	0 - 40	
Operating Relative Humidity (Non-condensing) (%)	0 - 90	
Online Thermal Dissipation (BTU/hr)	34.1	
Certifications		
Certifications*	CE	
RoHS	Yes	

*Certifications may vary according to different regions. Visit www.cyberpower.com for more information.
 #All specifications are subject to change without notice.