

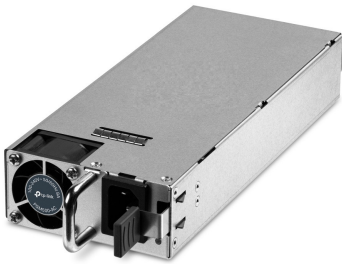
500W/900W AC Power Supply Module

Datasheet

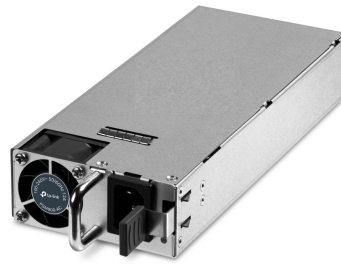
MODEL: PSM500-AC/PSM900-AC

Highlights

- Up to 500/900 watts output power
- Output over-voltage/under-voltage/short circuit/over-current protection
- Suitable for SG6428XHP, SG6654XHP, S6500-24GP4XF, S6500-48GP6XF, S6500-24MPP4Y, S6500-48MPP6Y.



PSM500-AC



PSM900-AC

Overview

The TP-Link Power Supply Module PSM500-AC/PSM900-AC is an AC-input and DC-output power supply module. It can convert the input voltage to 53.5 Volts with a maximum output power of 500/900 Watts. The power supply module is fully hot-swappable, helping to ensure no system interruption during installation or replacement. The TP-Link Power Supply Module is applicable to multiple TP-Link Omada and TP-Link Omada Pro switch models, such as SG6428XHP, SG6654XHP, S6500-24GP4XF, 6500-48GP6XF, S6500-24MPP4Y, and S6500-48MPP6Y.

Specifications

General Specifications

Normal	PSM500-AC	PSM900-AC
LED	Multi-function indication. The indication includes the status of standby, normal, alarm, and fault.	
Power Input	100-240V~ 50/60Hz 8A	100-120V(include)~ 50/60Hz 12A (for locations using low voltage) 120(not include)-240V~ 50/60Hz 10A (for other locations)
Output Voltage	53.5V	53.5V
Output Current	9.35 A (Maximum)	16.5 A (Maximum)
Output Power	500 W (Maximum)	900 W (Maximum)
Dimensions	259.5*95.8*40.1 mm	259.5*95.8*40.1 mm

Environmental and Physical Specifications

Operating Temperature	0 °C to 45 °C (32 °F to 113 °F)
Storage Temperature	-40 °C to 70 °C (-40 °F to 158 °F)
Operating Humidity	10% to 90% RH, Non-condensing
Storage Humidity	5% to 90% RH, Non-condensing